

N-Glycan Modification of a Recombinant Protein via Coexpression of Human Glycosyltransferases in Silkworm Pupae

著者	Kato Tatsuya, Kako Natsumi, Kikuta Kotaro, Miyazaki Takatsugu, Kondo Sachiko, Yagi Hirokazu, Kato Koichi, Park Enoch Y.
journal or publication title	Scientific reports
volume	7
page range	1409
year	2017-05-03
出版者	Springer Nature
URL	http://hdl.handle.net/10297/10130

doi: 10.1038/s41598-017-01630-6

Supplementary Information

N-Glycan Modification of a Recombinant Protein via Coexpression of Human Glycosyltransferases in Silkworm Pupae

Tatsuya Kato^{a,b}, Natsumi Kako^a, Kotaro Kikuta^a, Takatsugu Miyazaki^{a,b}, Sachiko Kondo^{c,d}, Hirokazu Yagi^c, Koichi Kato^{c,d,e} & Enoch Y. Park^{a,b*}

E-mails:

kato.tatsuya@shizuoka.ac.jp (TK)
szd_723@yahoo.co.jp (NK)
si0122ho@yahoo.co.jp (KK)
miyazaki.takatsugu@shizuoka.ac.jp (TM)
kondo050525@yahoo.co.jp (SK)
hyagi@phar.nagoya-cu.ac.jp (HY)
kkato@phar.nagoya-cu.ac.jp (KK)
park.enoch@shizuoka.ac.jp (EYP)

* Corresponding authors. *E-mail address*: park.enoch@shizuoka.ac.jp (EYP)

^a *Laboratory of Biotechnology, Department of Applied Biological Chemistry, Faculty of Agriculture, Shizuoka University, 836 Ohya, Suruga-ku, Shizuoka 422-8529, Japan*

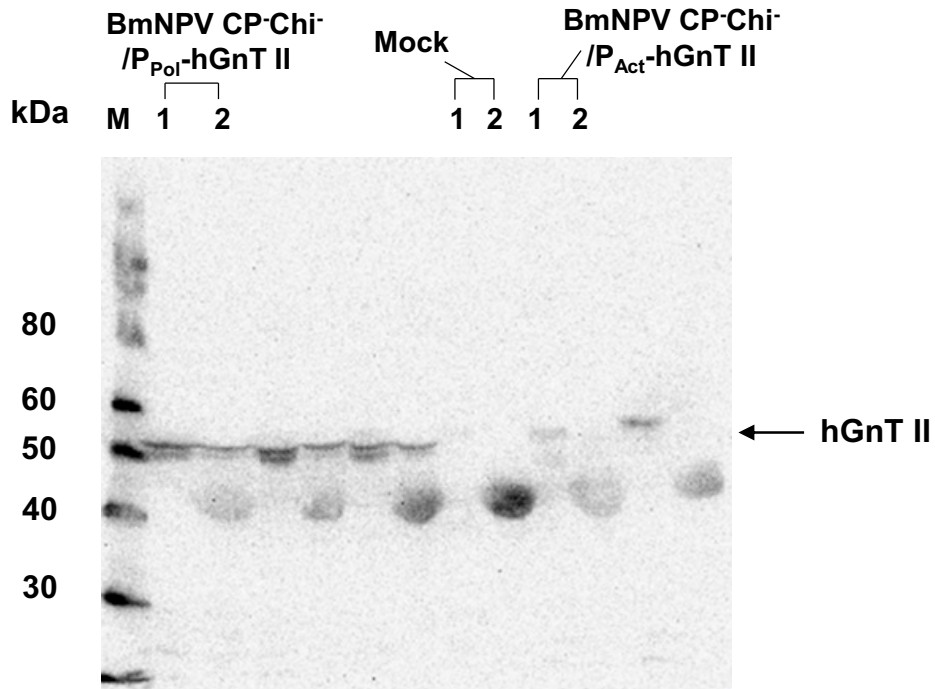
^b *Laboratory of Biotechnology, Research Institute of Green Science and Technology, Shizuoka University, 836 Ohya, Suruga-ku, Shizuoka 422-8529, Japan; Telephone & Fax: +81-54-238-4887*

^c *Graduate School of Pharmaceutical Sciences, Nagoya City University, 3-1 Tanabe-dori, Mizuho-ku, Nagoya 467-8603, Japan*

^d *Medical & Biological Laboratories Co., Ltd., 4-5-3 Sakae, Naka-ku, Nagoya 460-0008 Japan*

^e *Institute for Molecular Science and Okazaki Institute for Integrative Bioscience, National Institutes of Natural Sciences, 5-1 Higashiyama Myodaiji, Okazaki 444-8787, Japan*

20



21

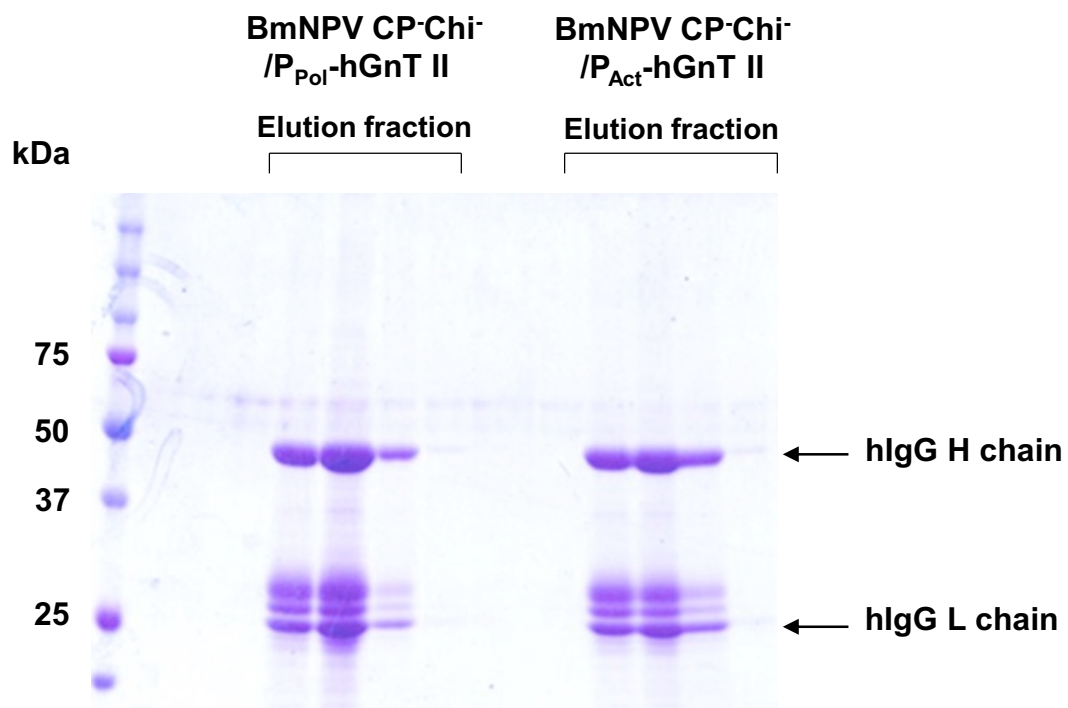
22

23 **Figure S1. The western blotting data of Fig 2 (A). Lane 1: Supernatant, lane 2: Pellet.**

24 **The band observed at 40 kDa is non-specific because the band was also observed in**
25 **the pellet fraction in the mock sample.**

26

27

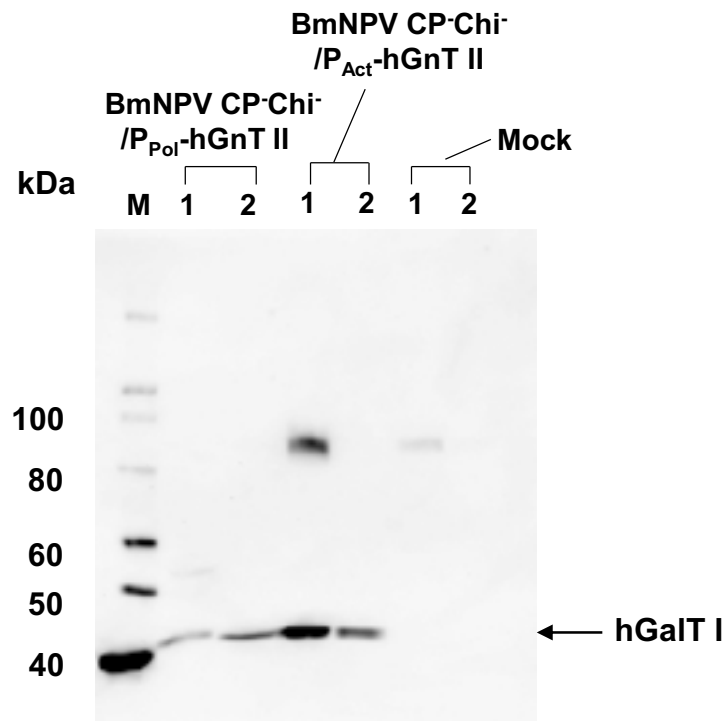


28

29 **Figure S2. The western blotting data of Fig 2 (B).**

30

31



32

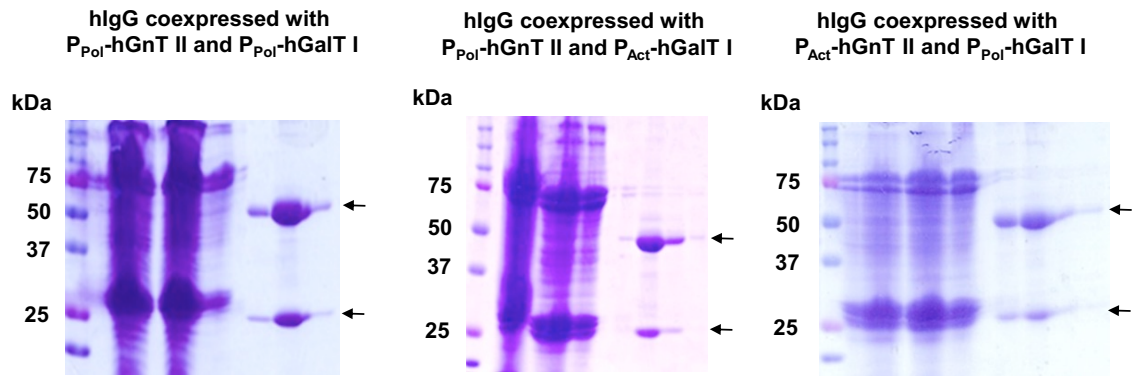
33 **Figure S3. The western blotting data of Fig 4 (A). Lane 1: Supernatant, lane 2: Pellet.**

34 **The band observed at 90 kDa is non-specific because the band was also observed in**

35 **the supernatant fraction in the mock sample.**

36

37



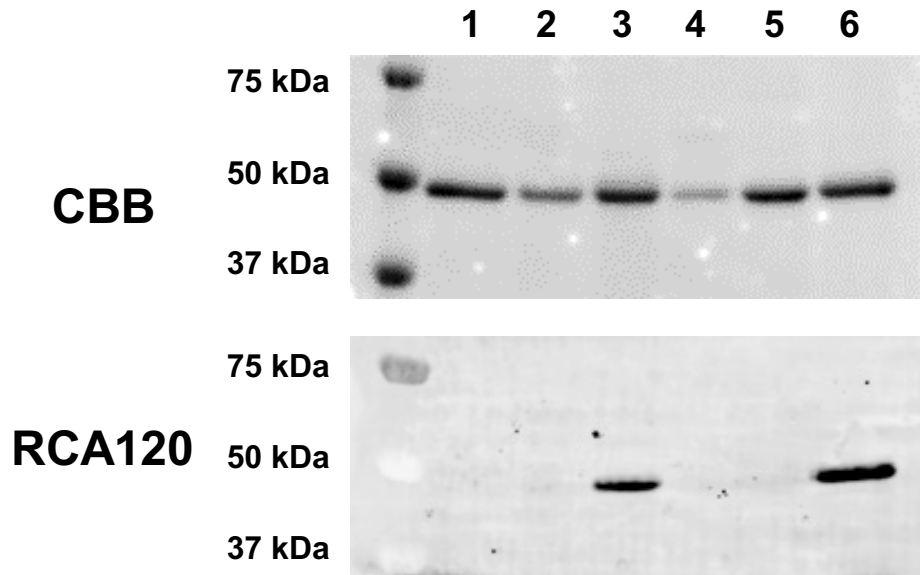
38

39 **Figure S4. The western blotting data of Fig 4 (B). Arrows indicate hlgG H chain (at**
40 **around 50 kDa) and light chain (at around 25 kDa).**

41

42

43



44

45

46 **Figure S5. Lectin blot analysis of purified hIgG using FITC-conjugated RCA120.** In
47 this lectin blot, 10 μ g of each purified hIgG was used. Lane 1: hIgG, lane 2: hIgG
48 coexpressed with P_{Act}-hGnT II, lane 3: hIgG coexpressed with P_{Act}-hGnT II and P_{Pol}-
49 hGalT I, lane 4: hIgG coexpressed with P_{Pol}-hGnT II, lane 5: hIgG coexpressed with P_{Pol}-
50 hGnT II and P_{Act}-hGalT I, lane 6: hIgG coexpressed with P_{Pol}-hGnT II and P_{Pol}-hGalT I.

51