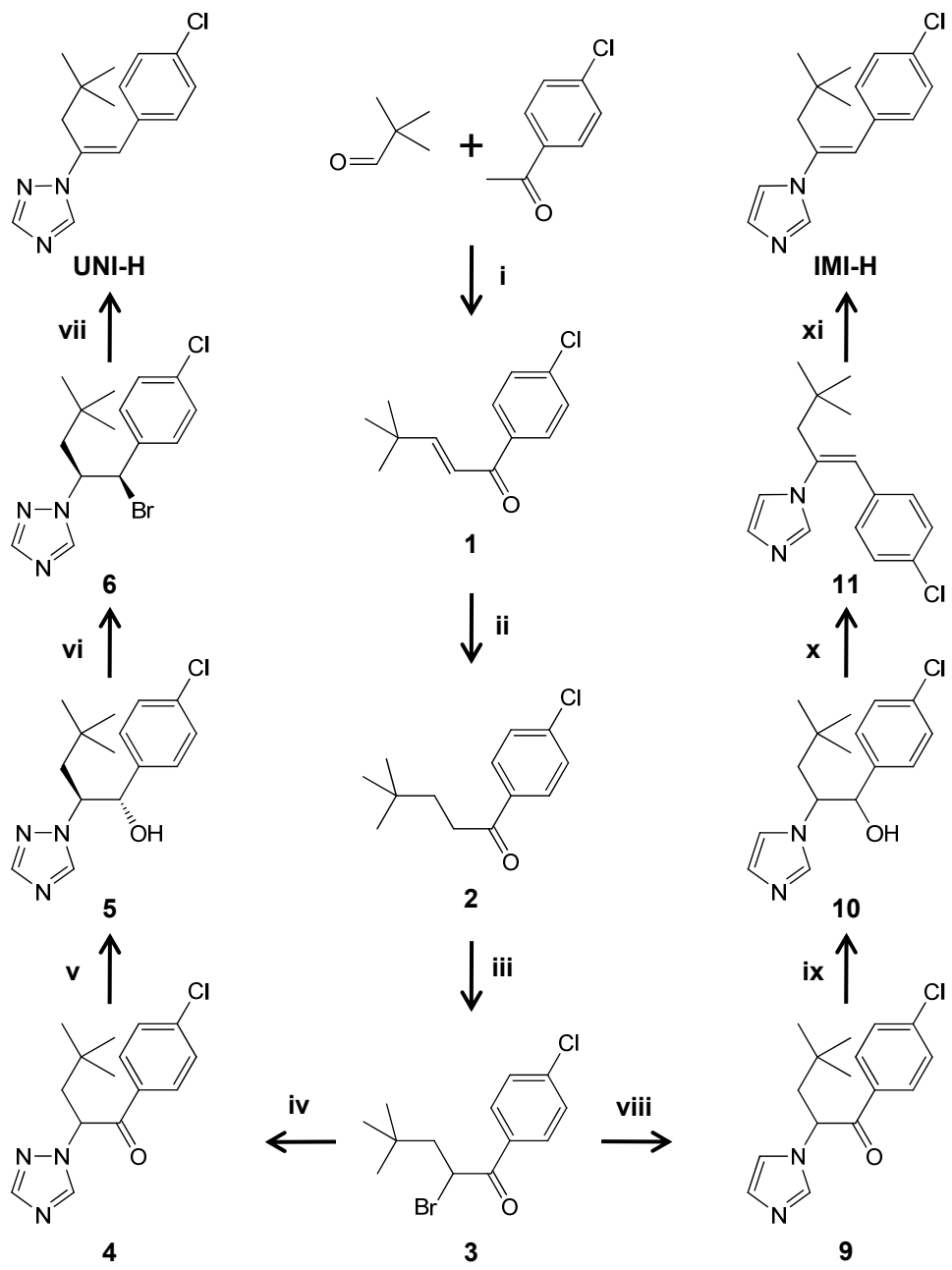
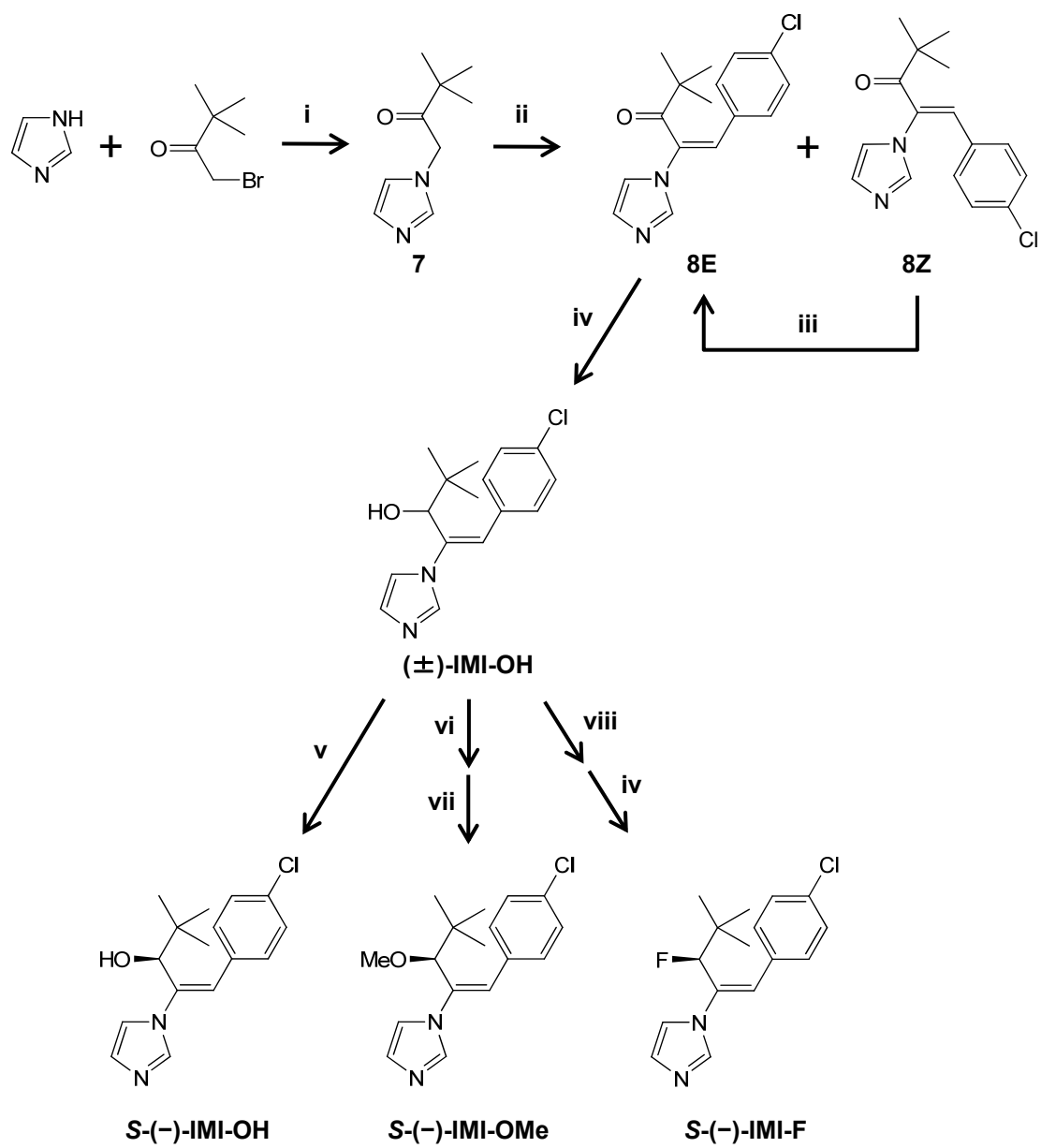


Scheme 1



Scheme 2



Scheme 3

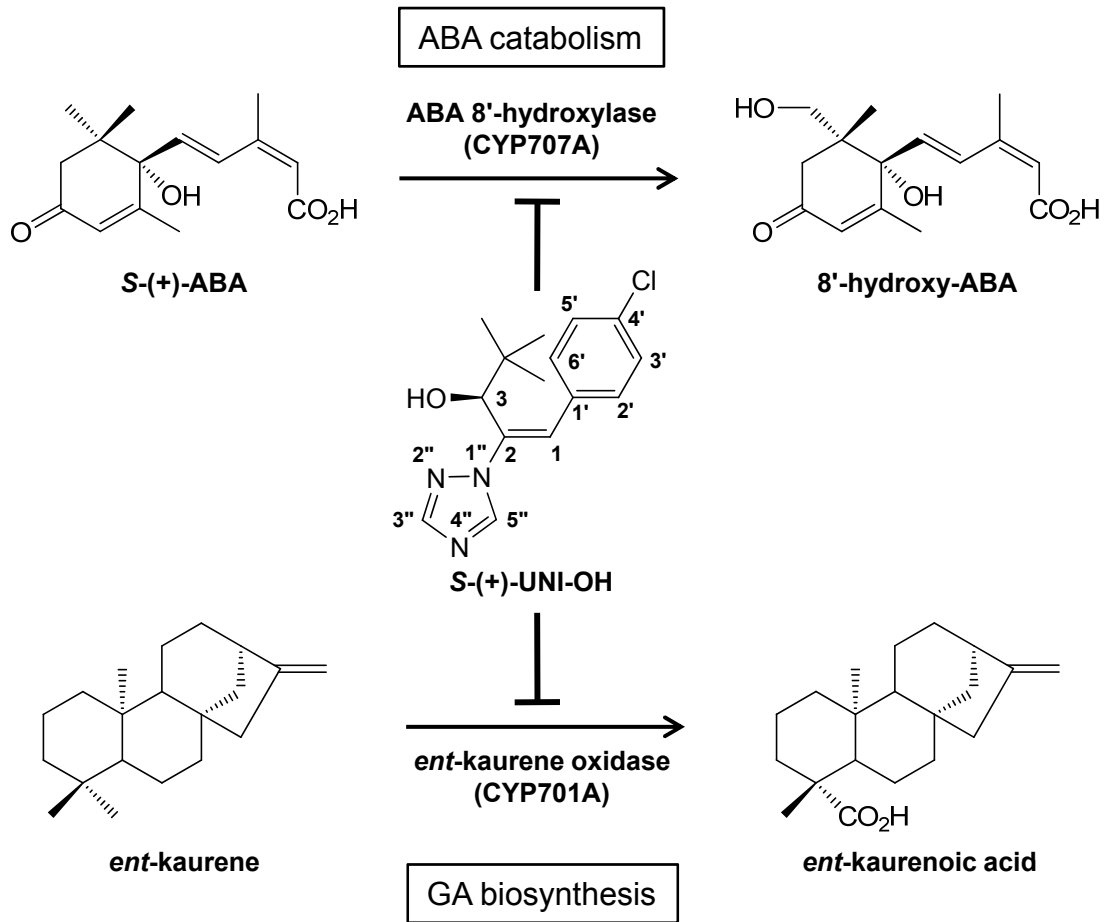


Figure 1

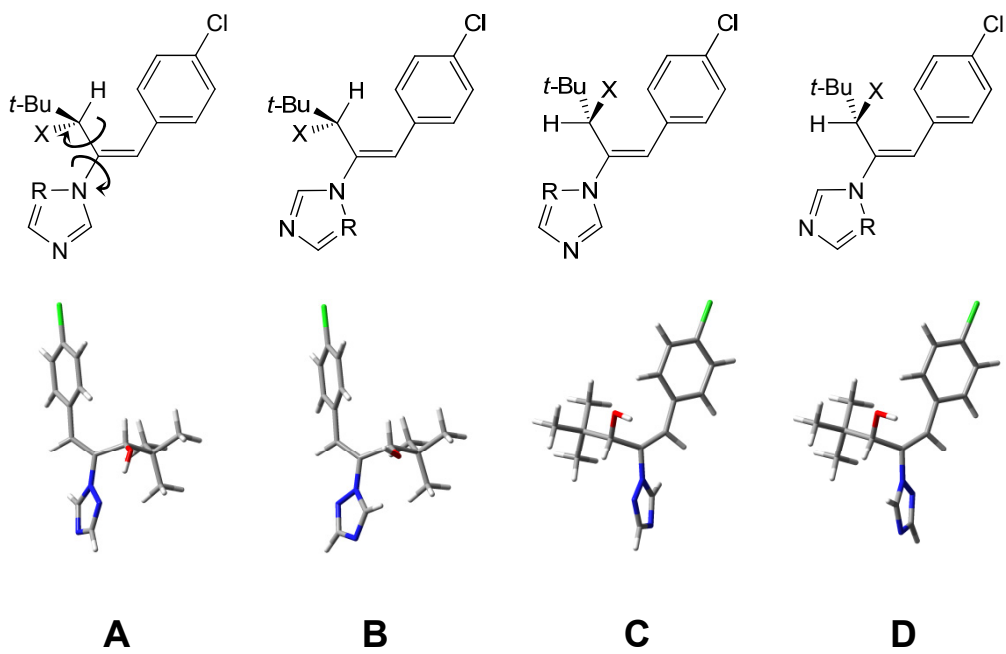
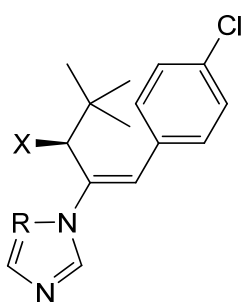


Figure 2



	R	X
UNI-OH	N	OH
UNI-OMe	N	OMe
UNI-F	N	F
UNI-H	N	H
IMI-OH	CH	OH
IMI-OMe	CH	OMe
IMI-F	CH	F
IMI-H	CH	H

Figure 3

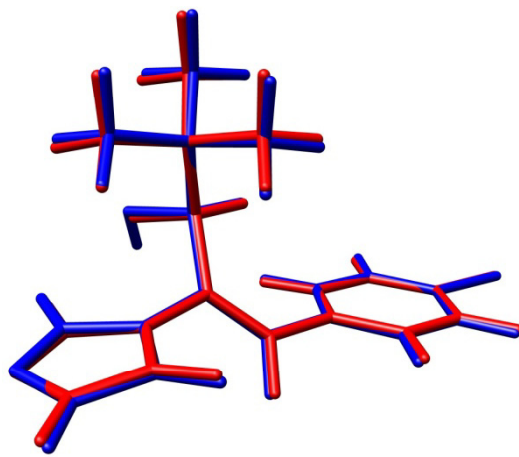
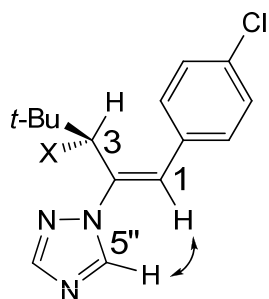
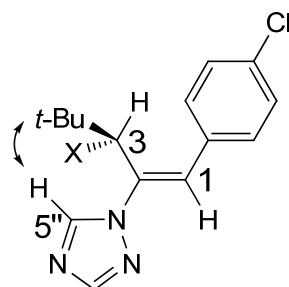


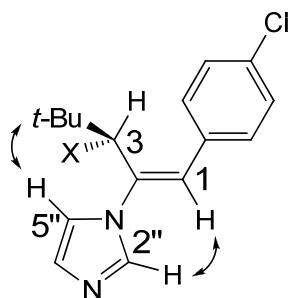
Figure 4



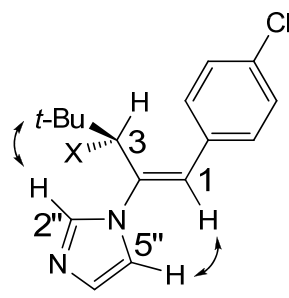
UNI-OH (in CDCl₃)
UNI-H (in both solvents)



UNI-OH (in methanol-*d*₄)
UNI-OMe (in both solvents)
UNI-F (in both solvents)
UNI-H (in both solvents)

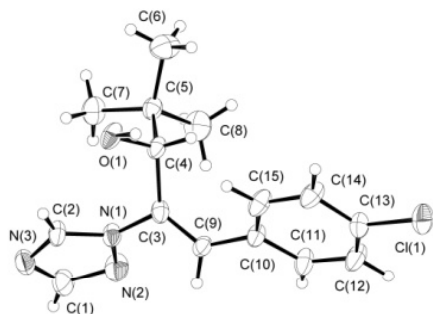
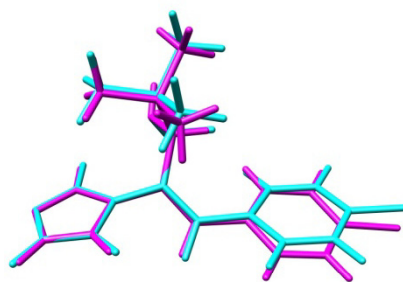
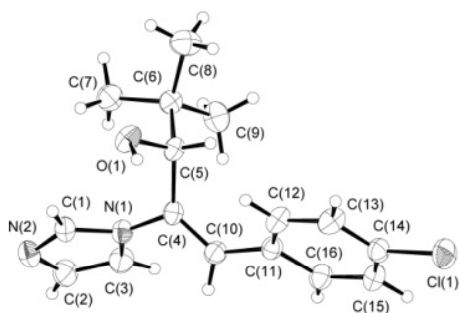
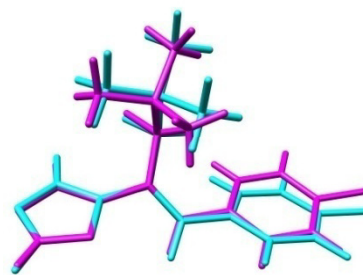
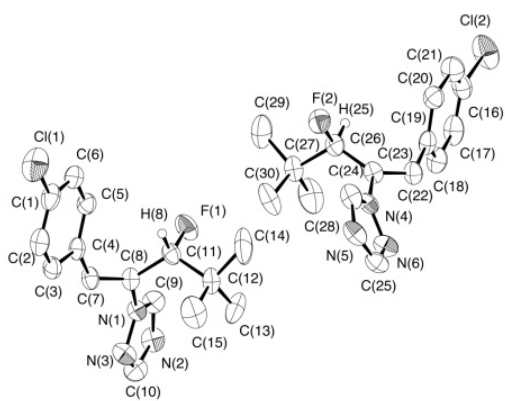


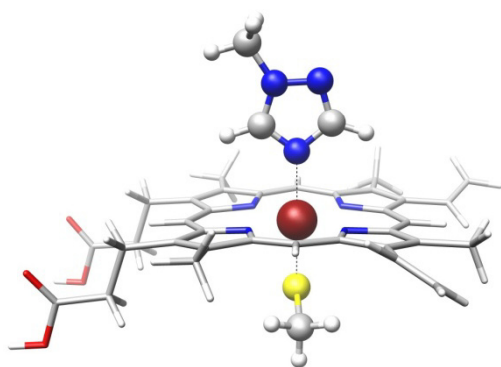
IMI-X (in both solvents)



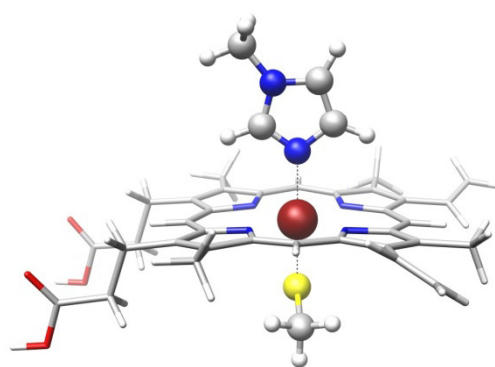
IMI-X (in both solvents)

Figure 5

a**b****Figure 6**



UNI-Heme model



IMI-Heme model

Figure 7