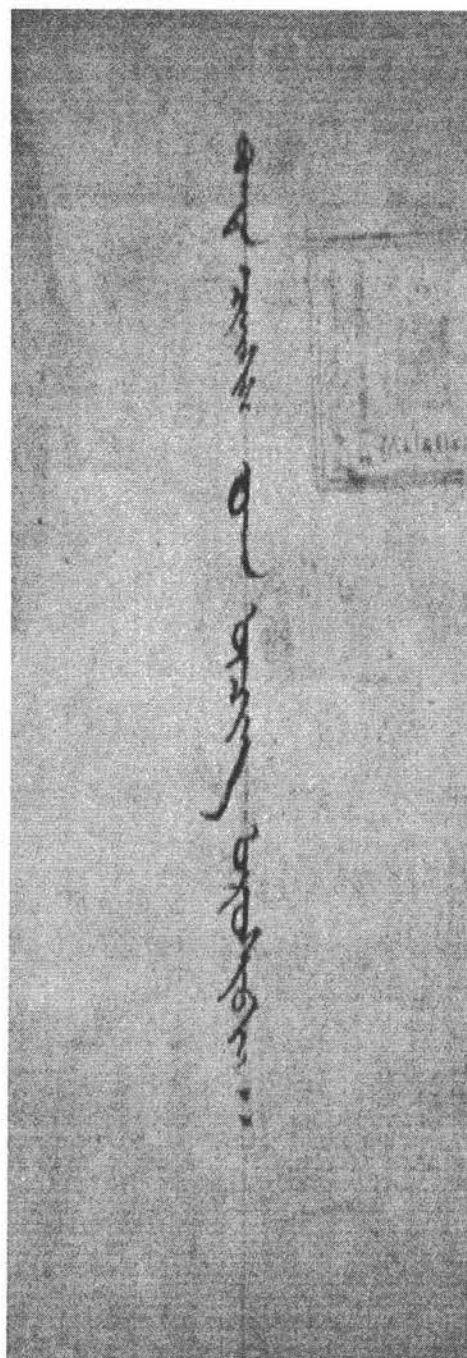
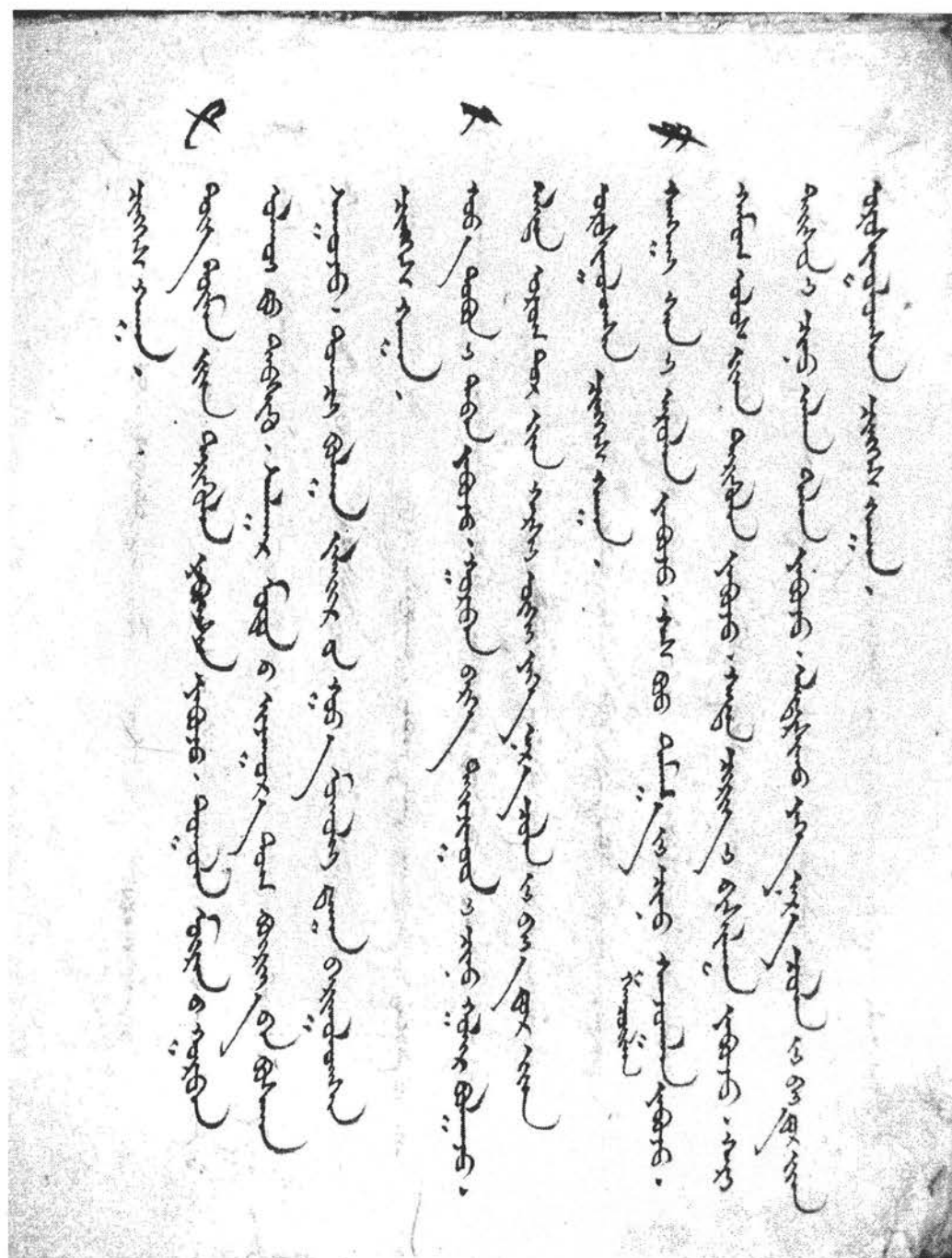


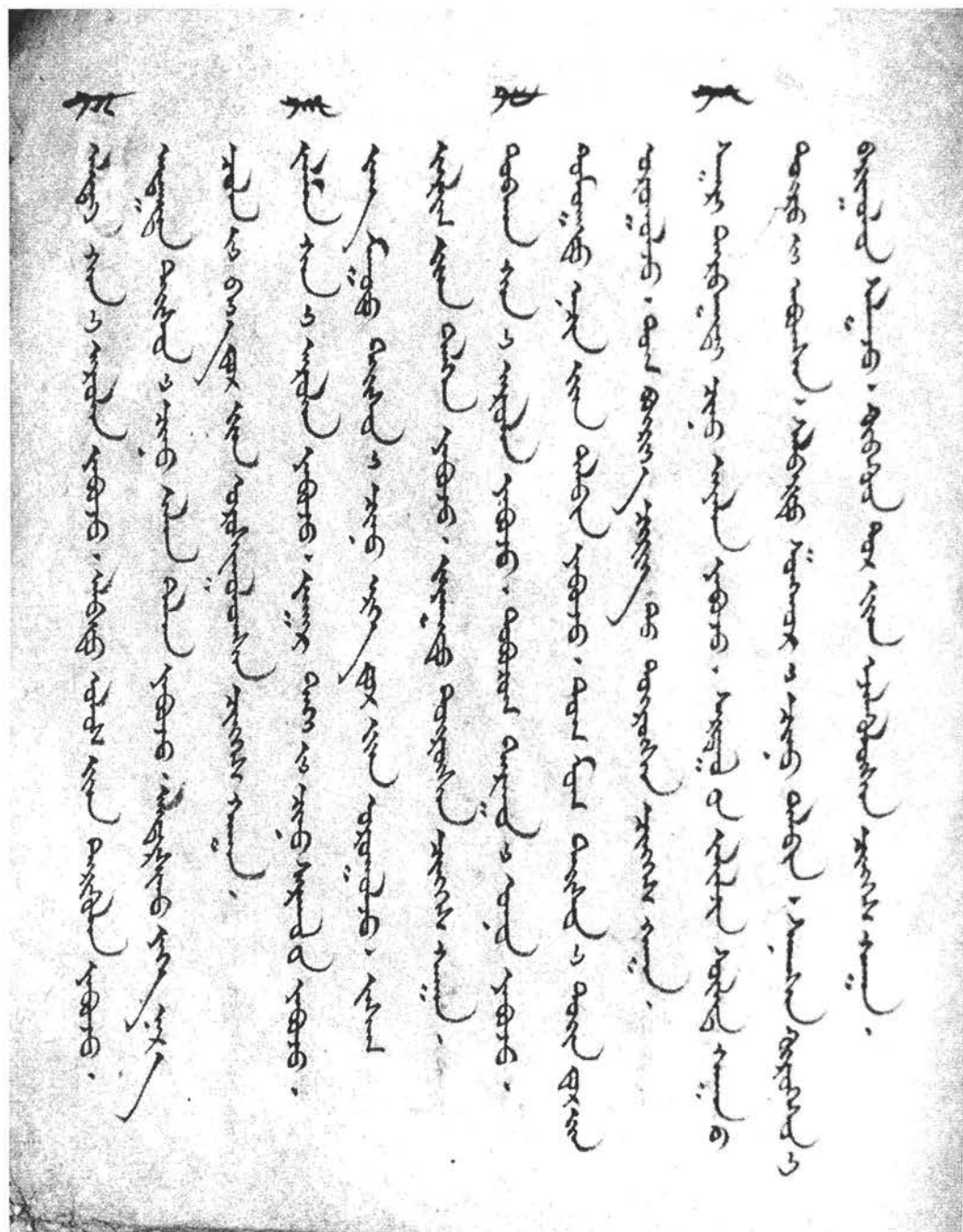
ウランバートル本「金書」



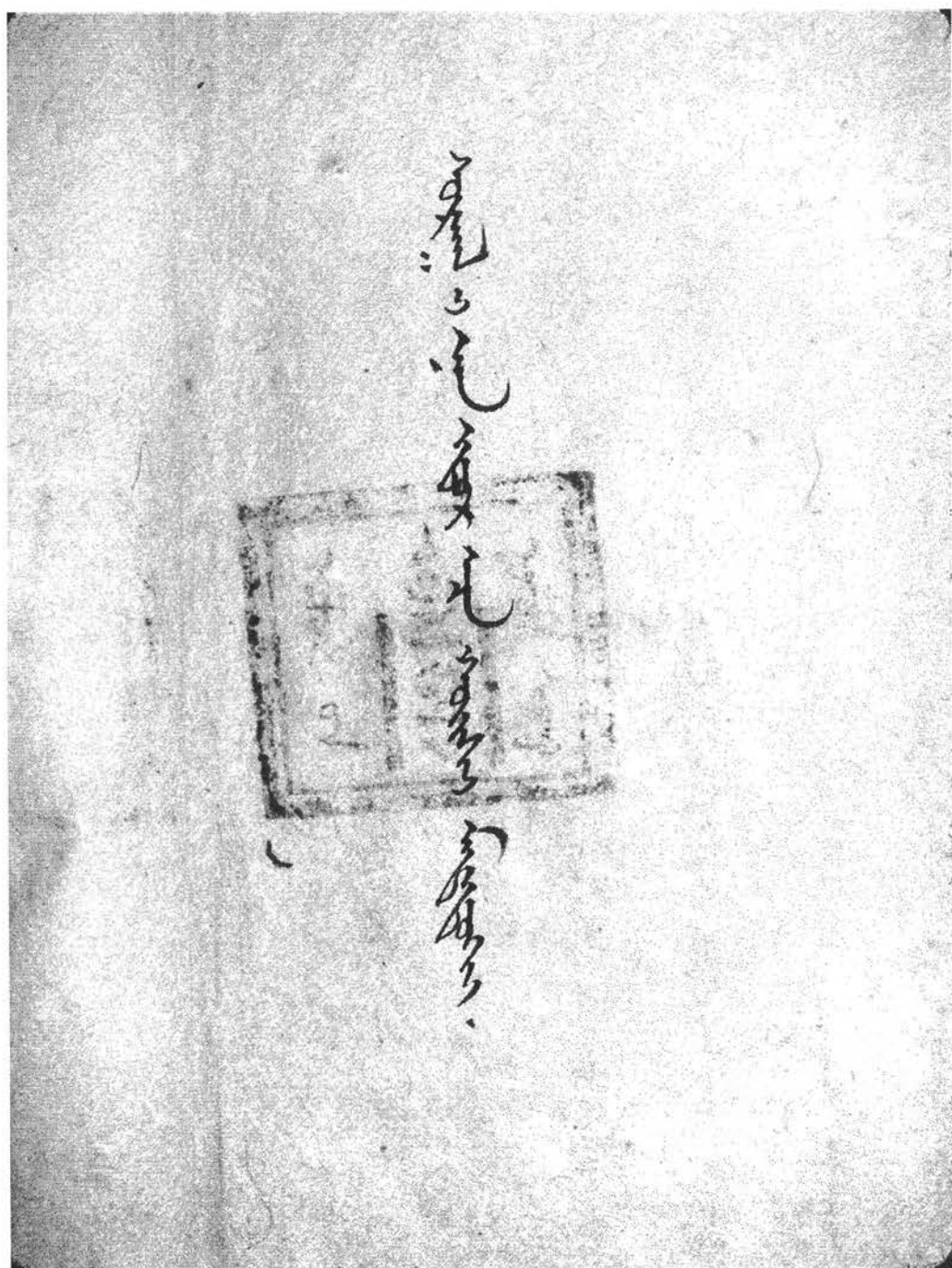
【表紙】

[illegible]

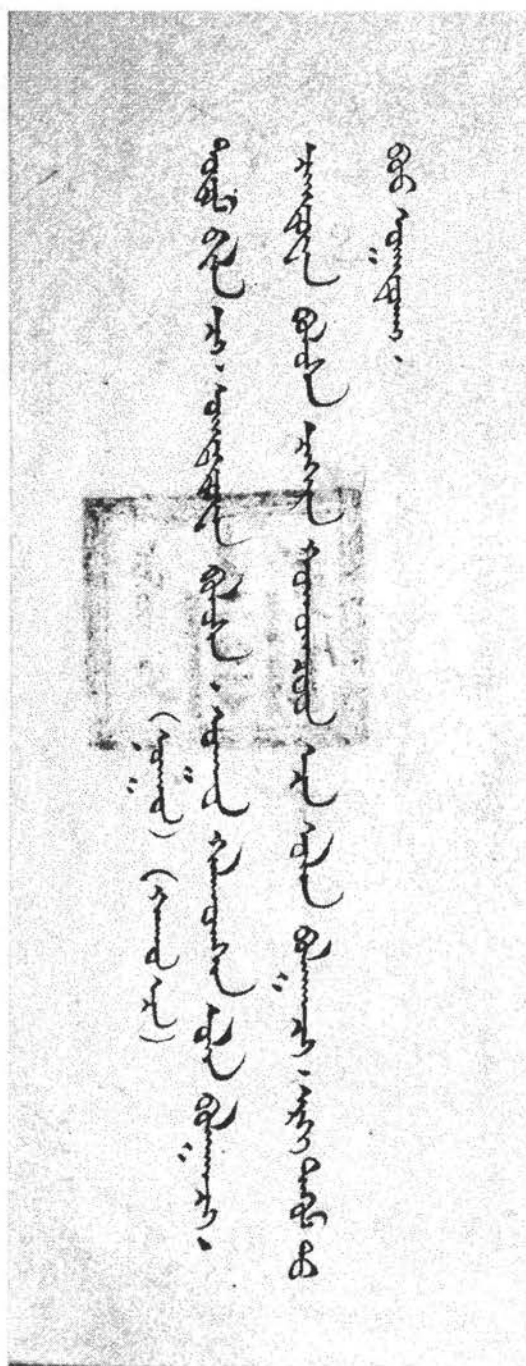


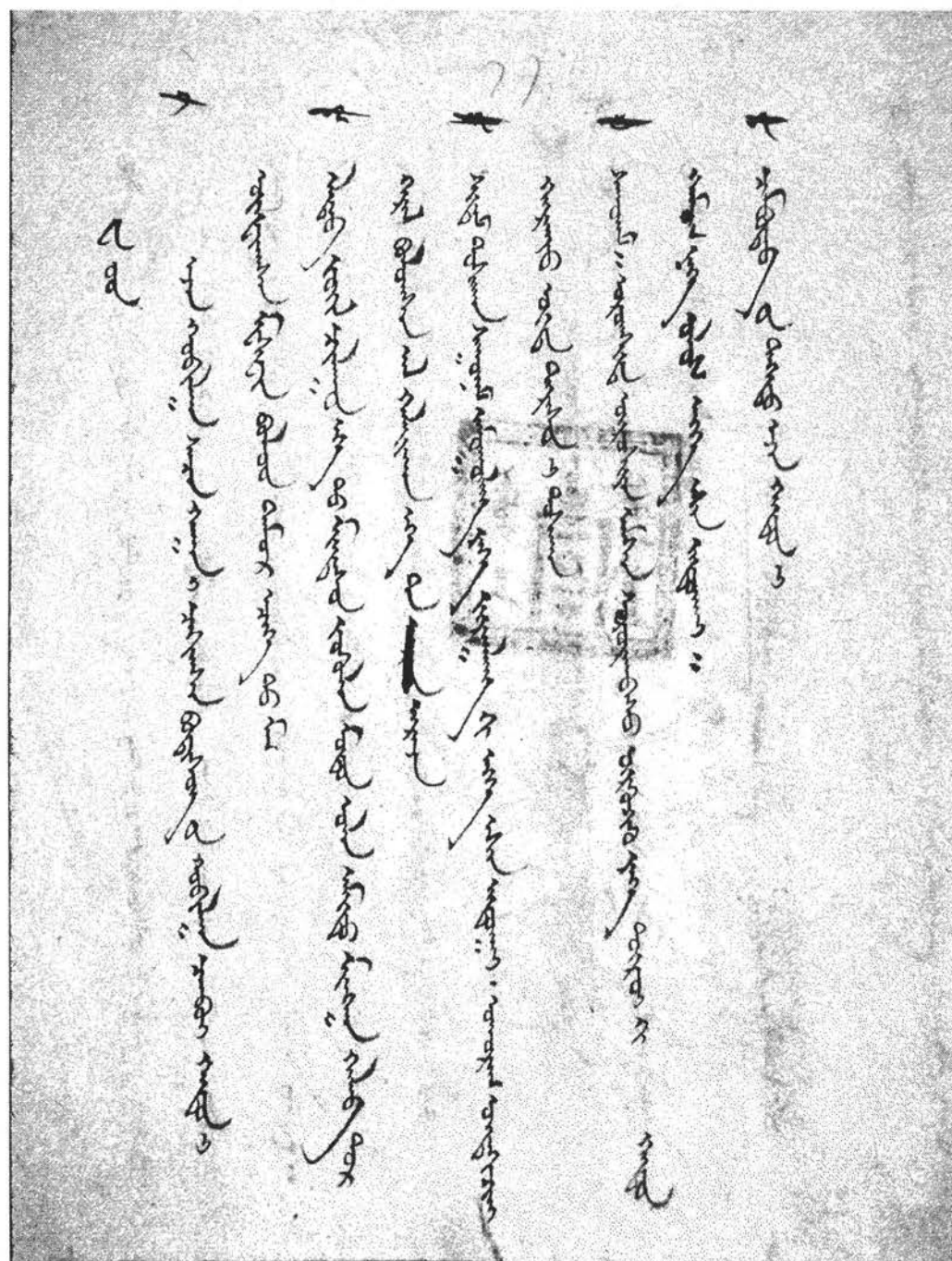


[illegible]

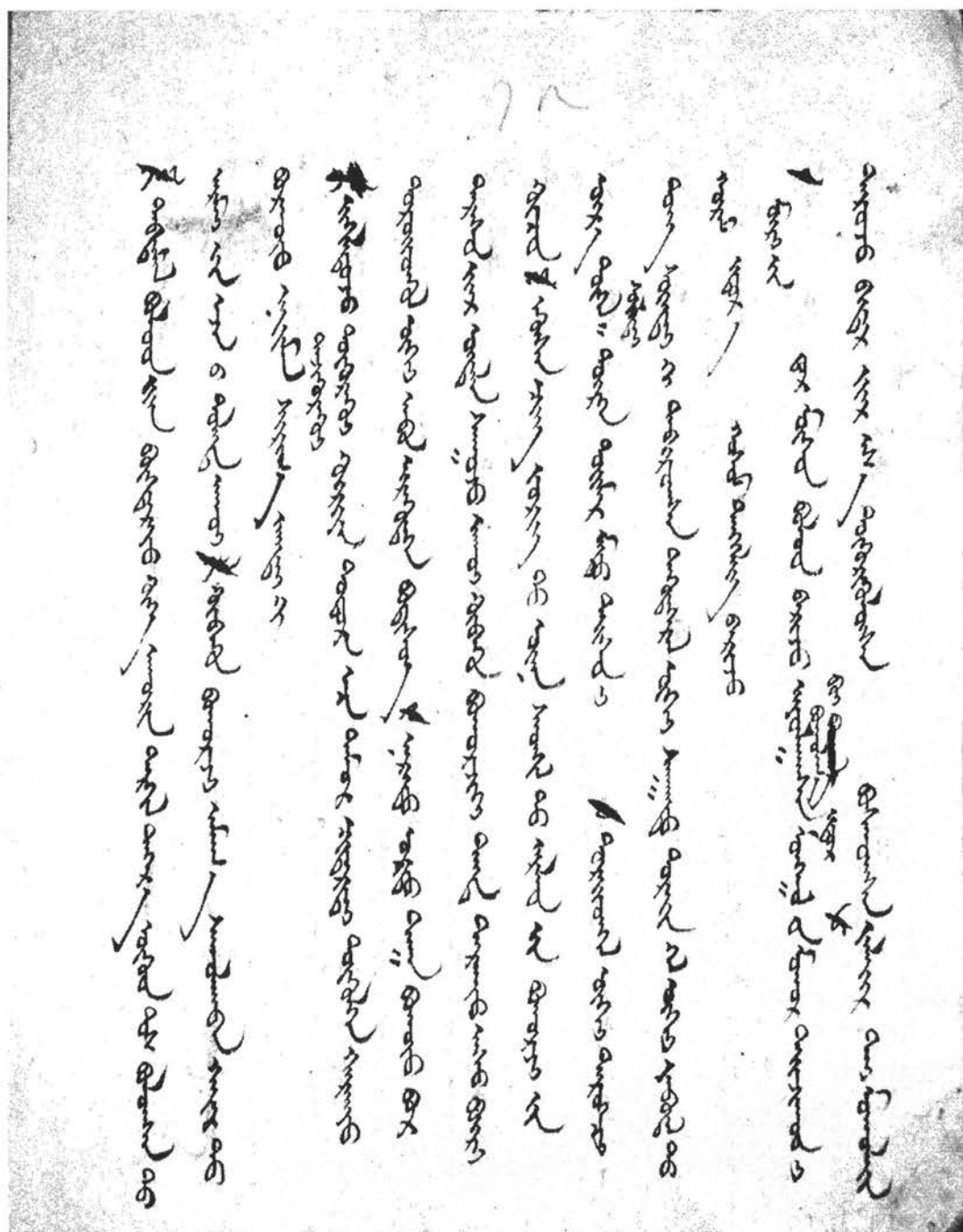


[illegible]

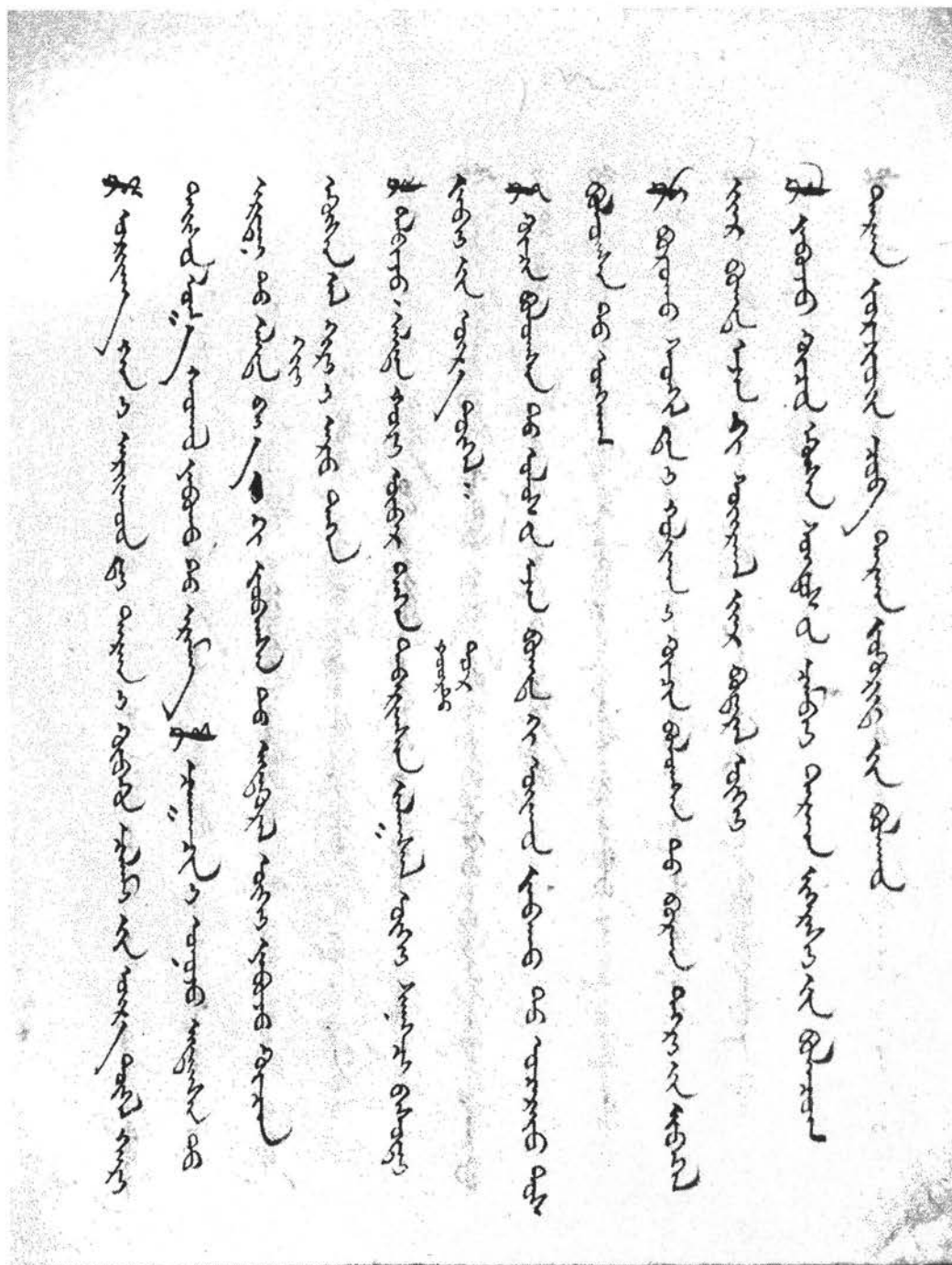




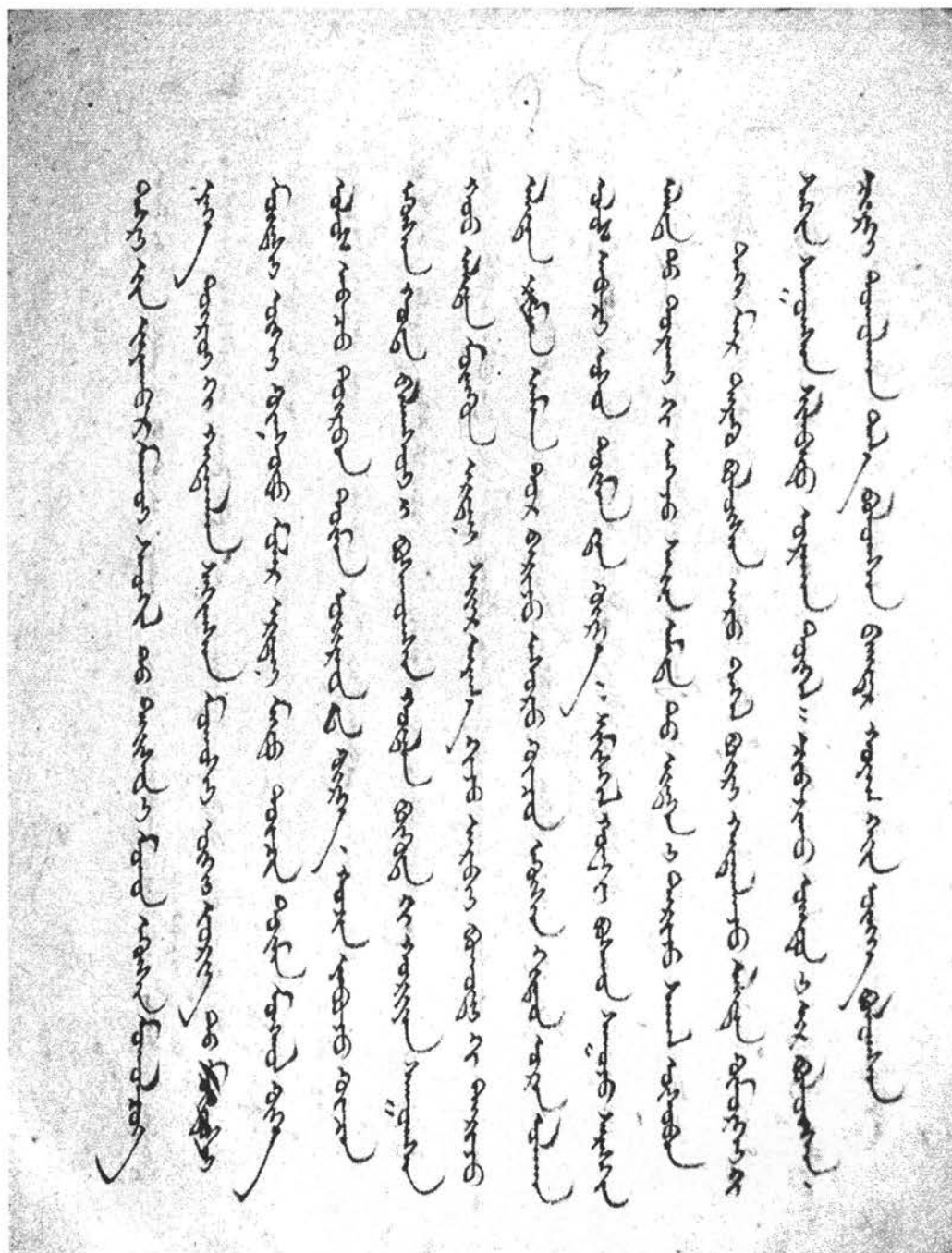
[illegible]

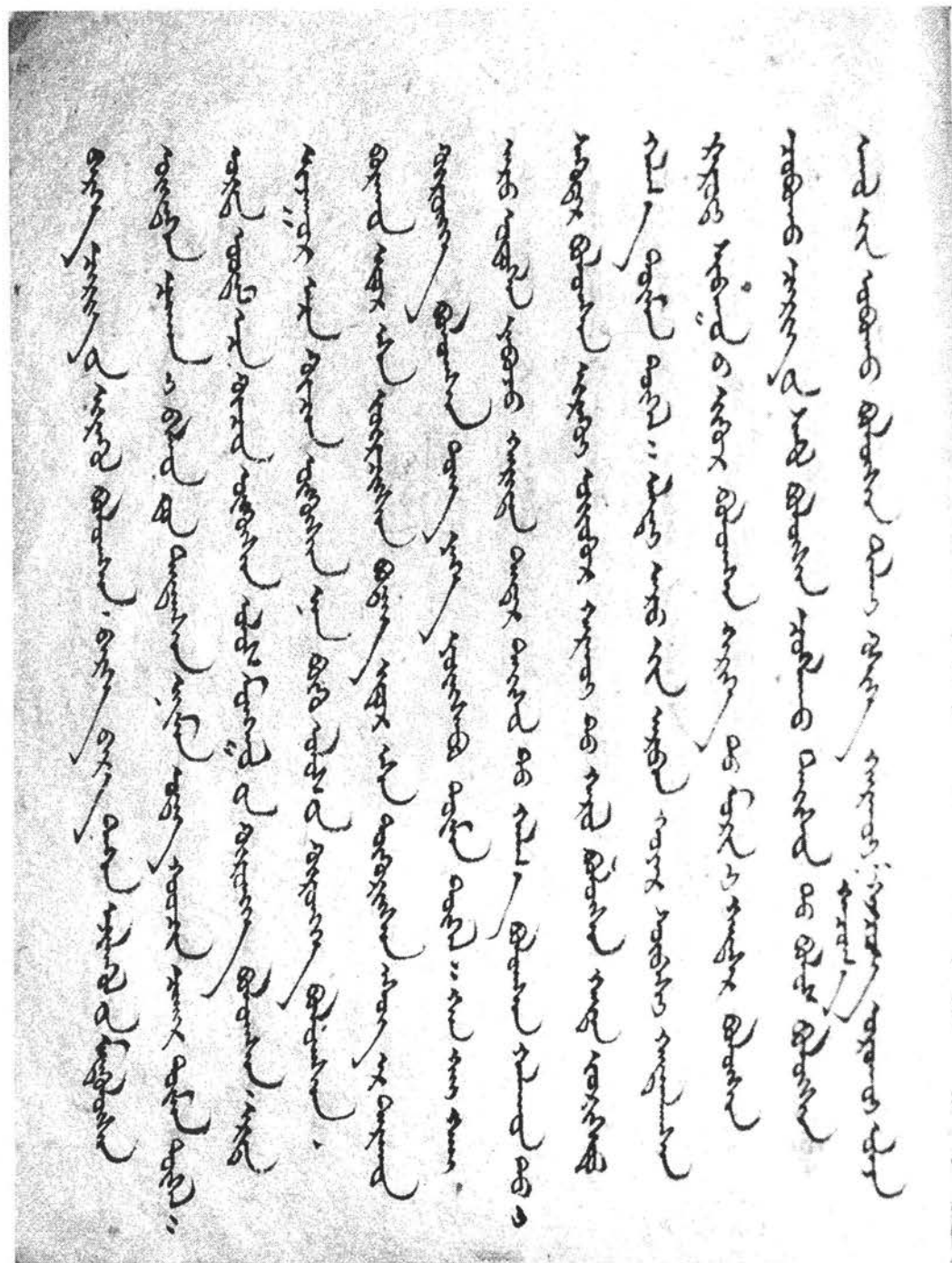


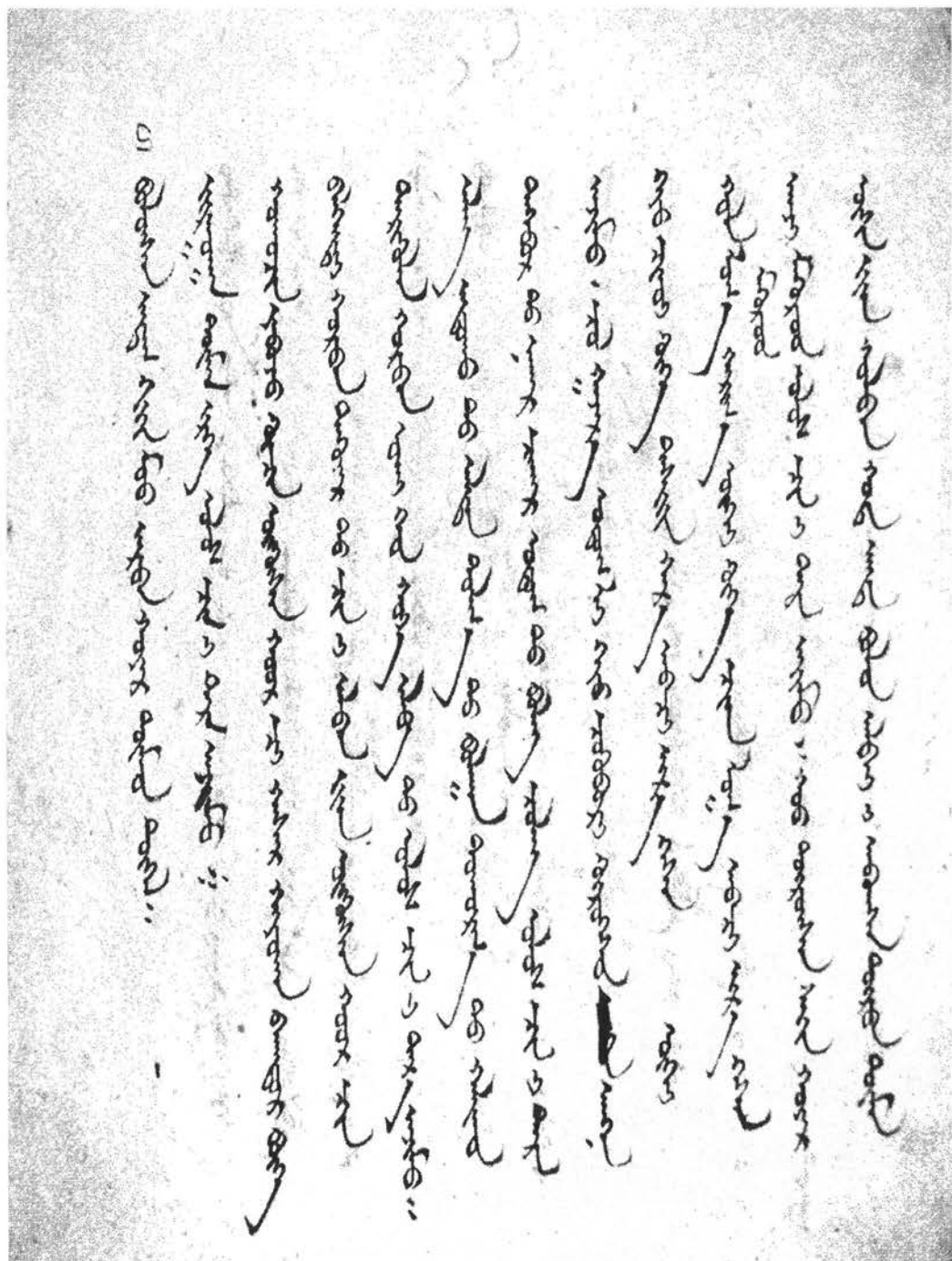
Handwritten text in a cursive script, likely a manuscript or a page from a book. The text is written in a fluid, connected style, characteristic of cursive handwriting. It appears to be a page from a manuscript, possibly a letter or a page from a book, given the context of the page number and the header information.

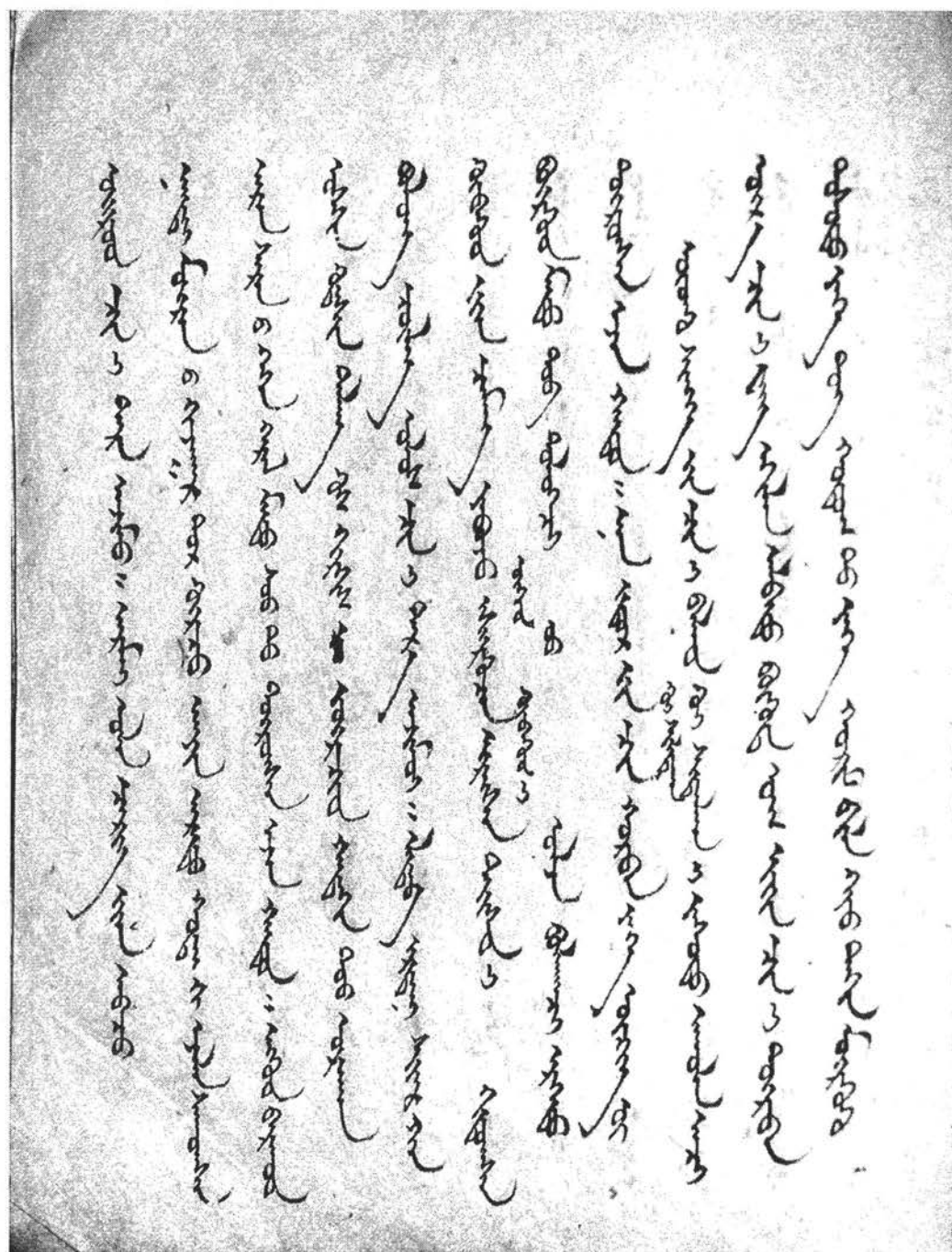


[illegible]

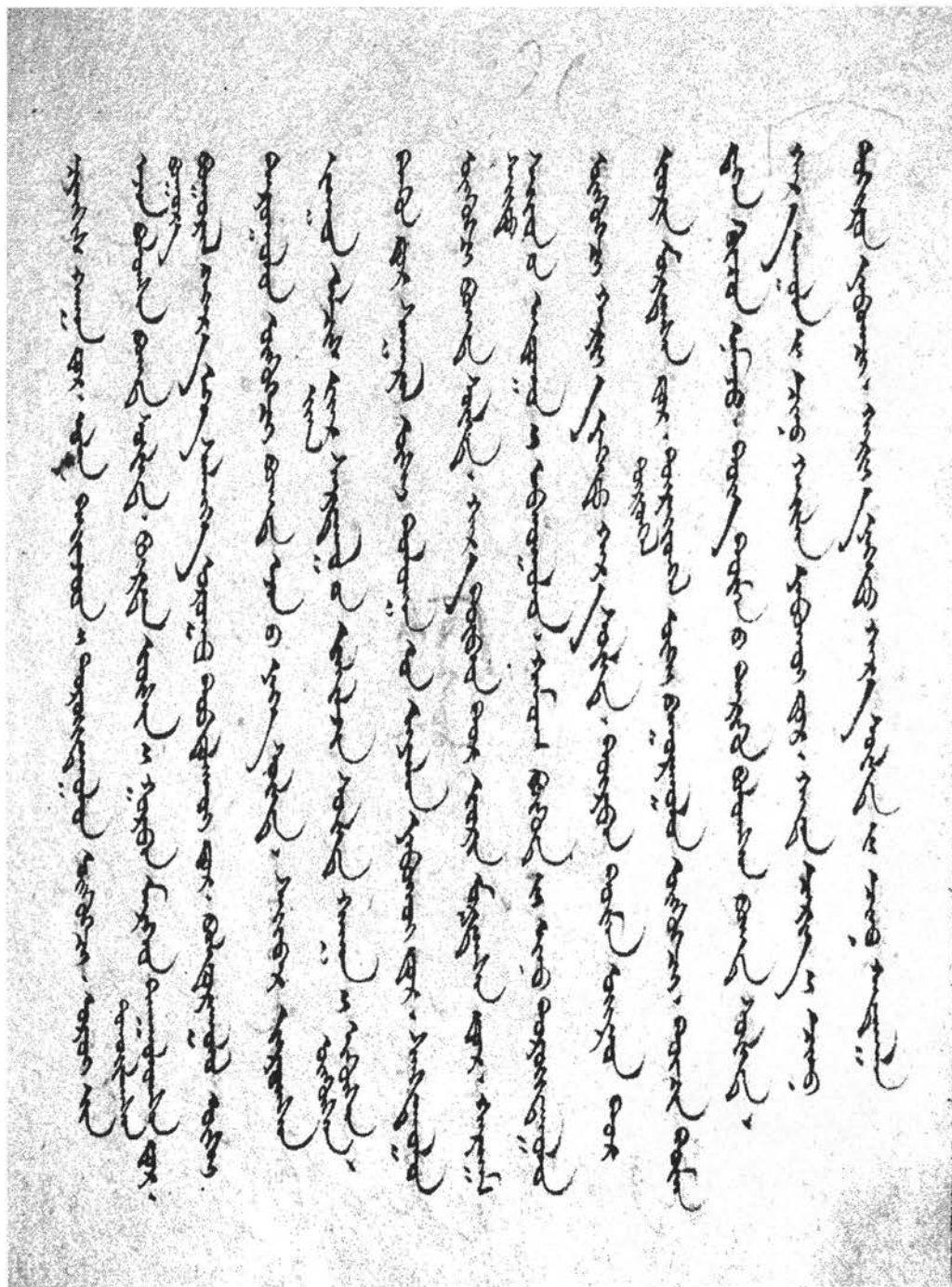


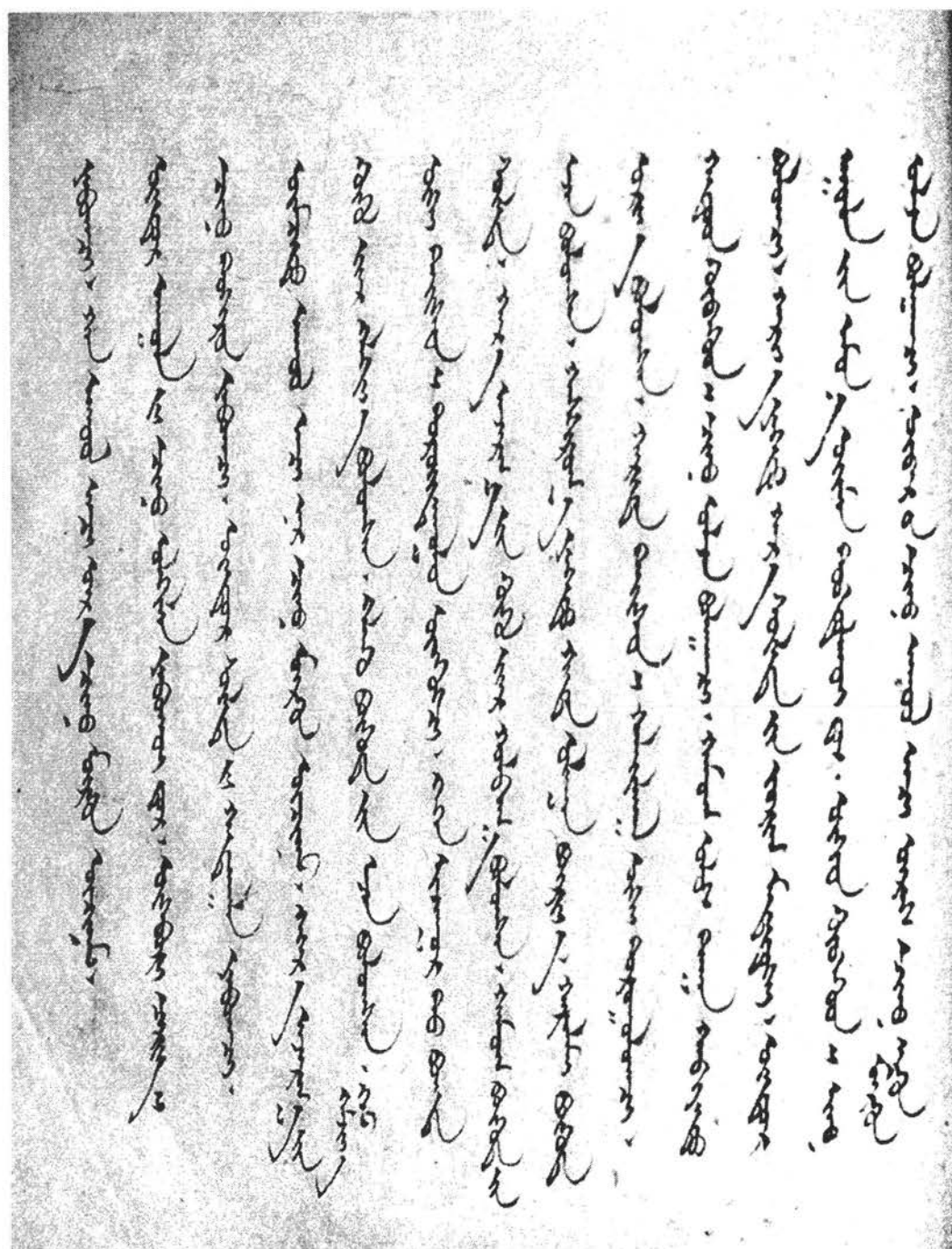


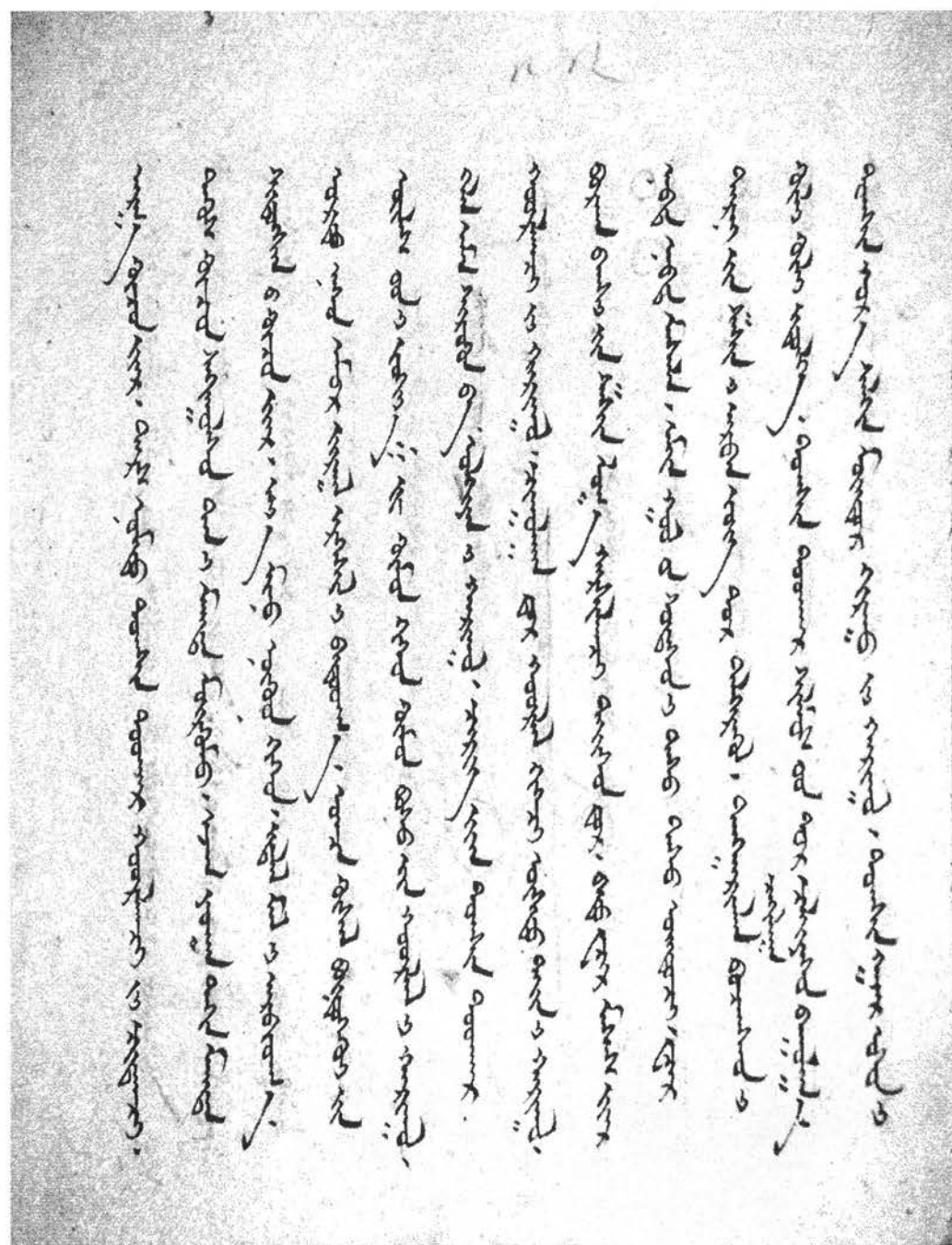


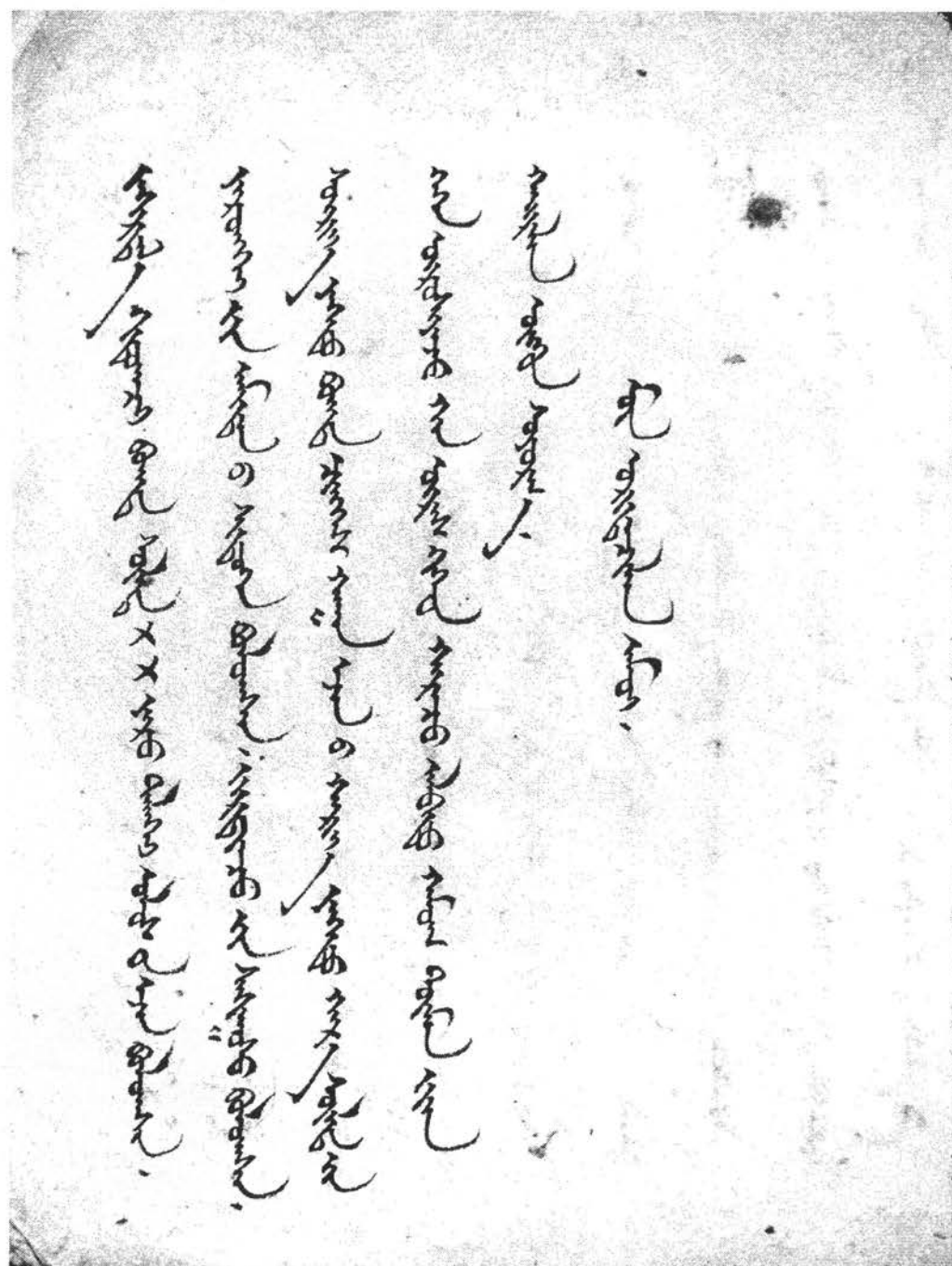


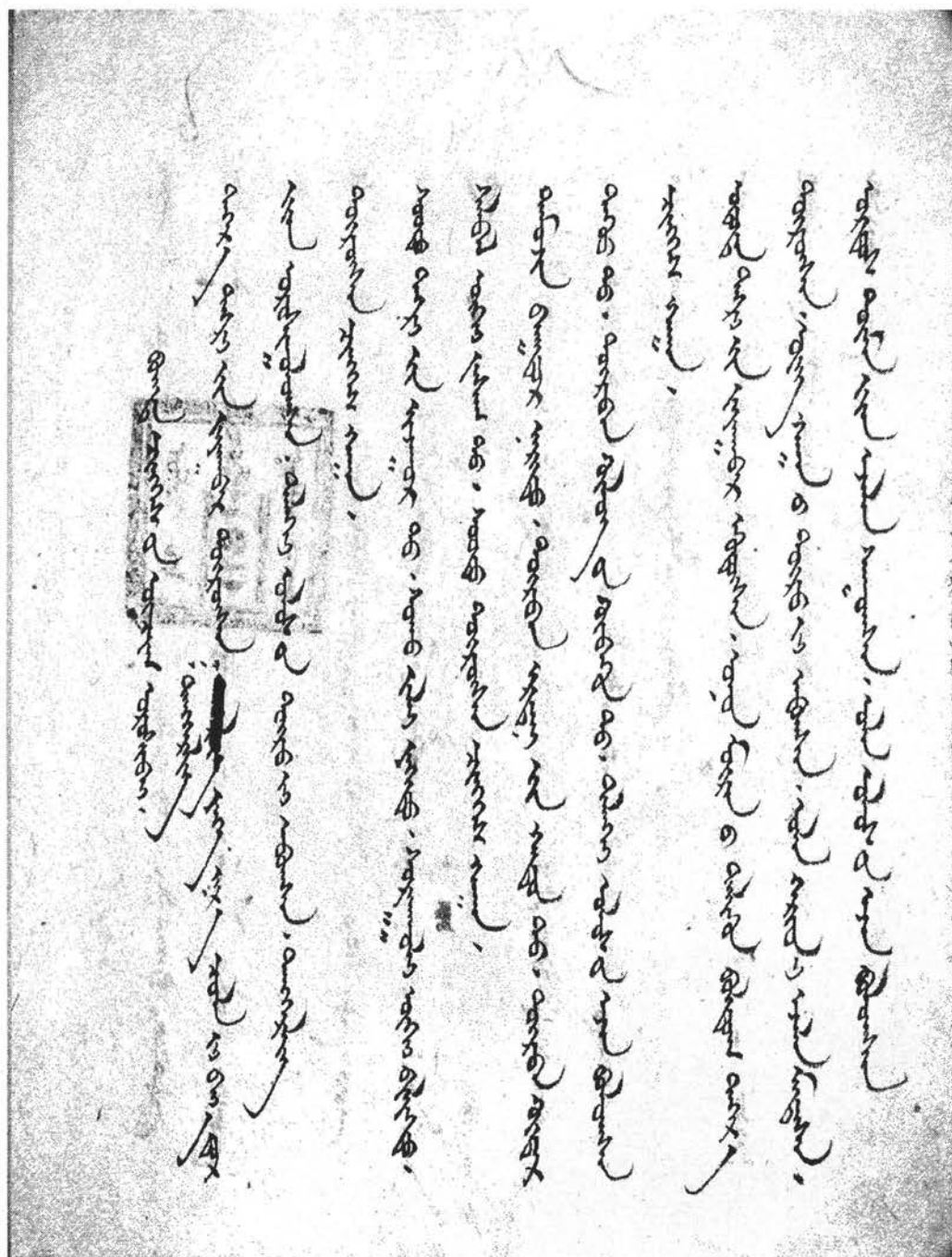
[illegible]





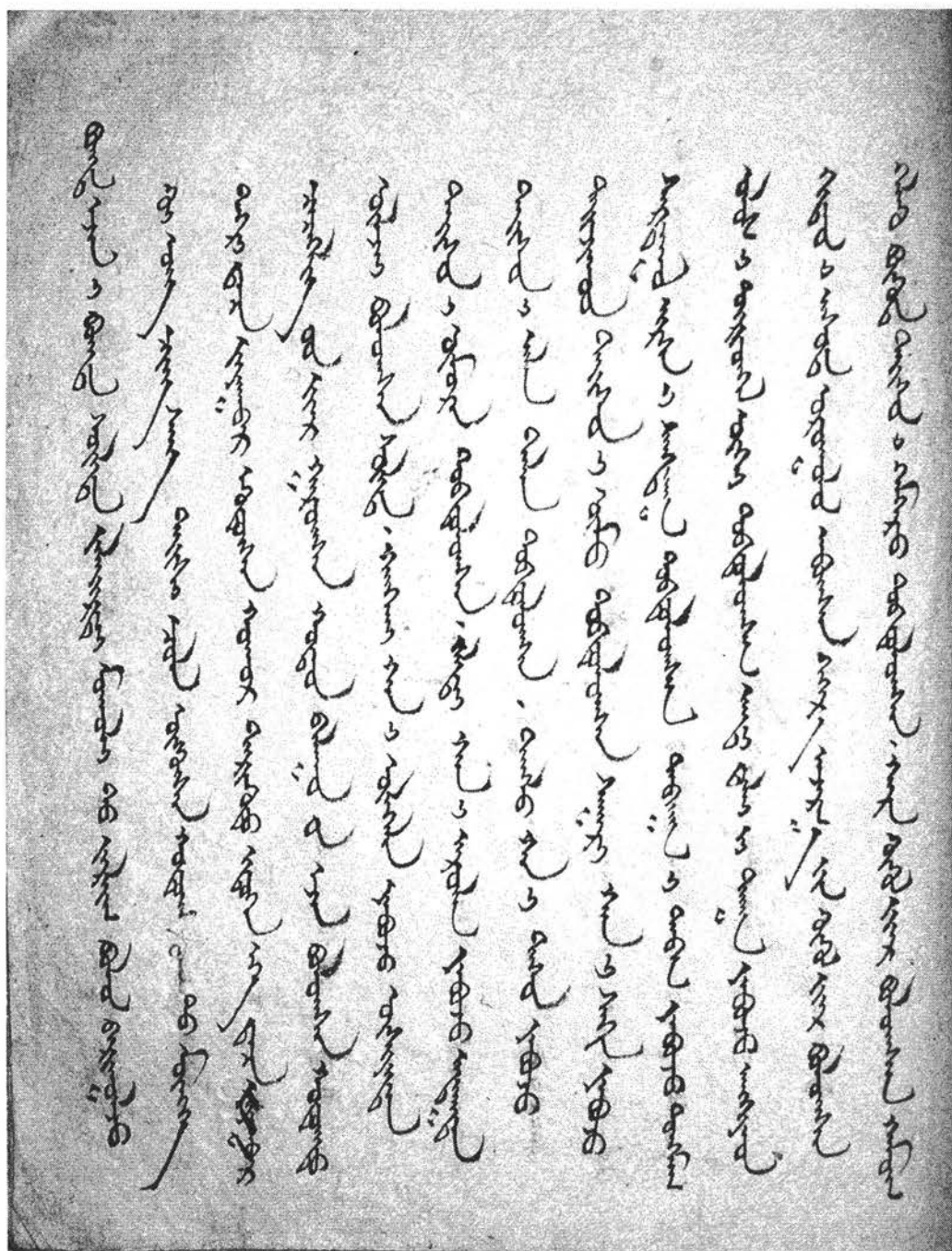


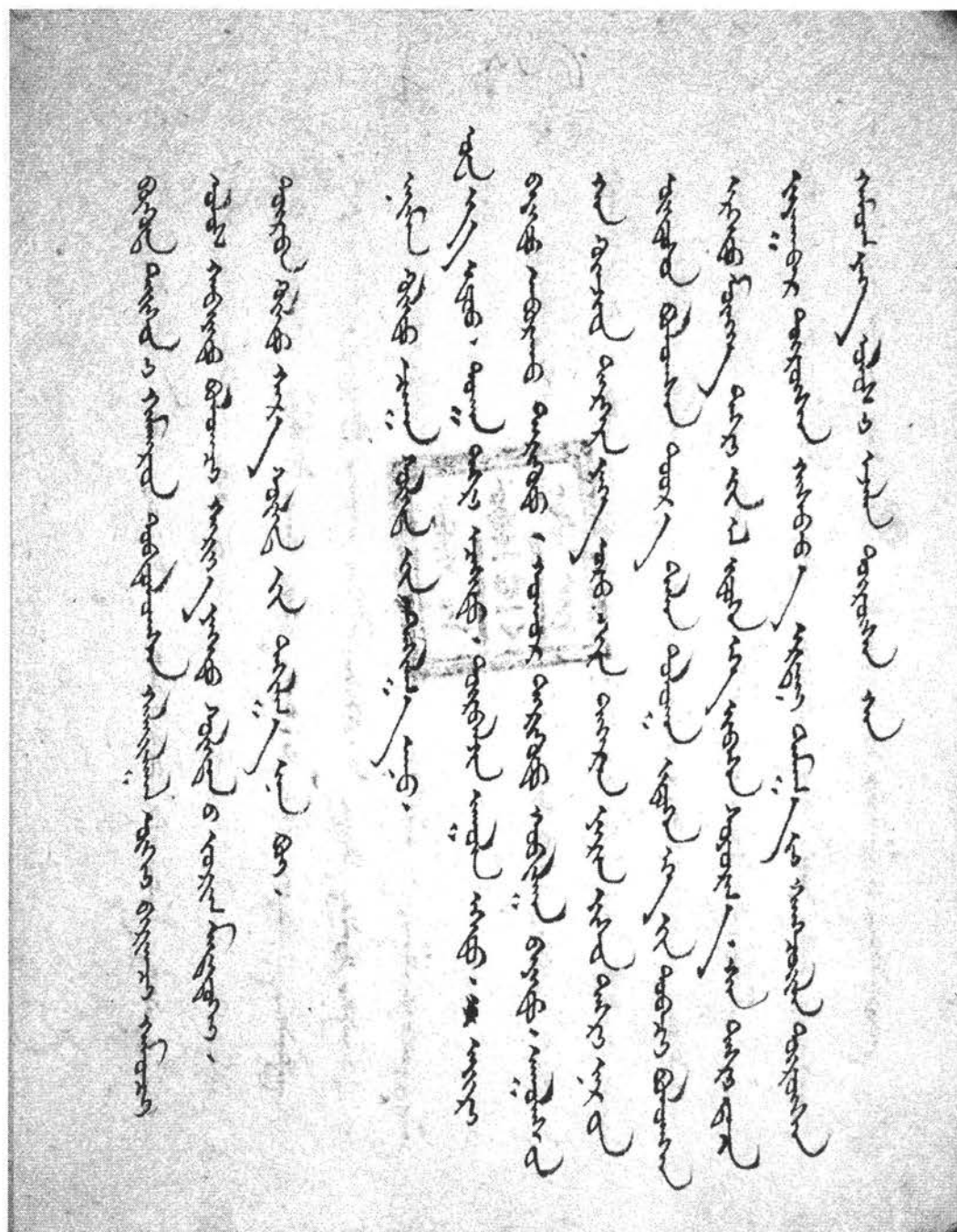


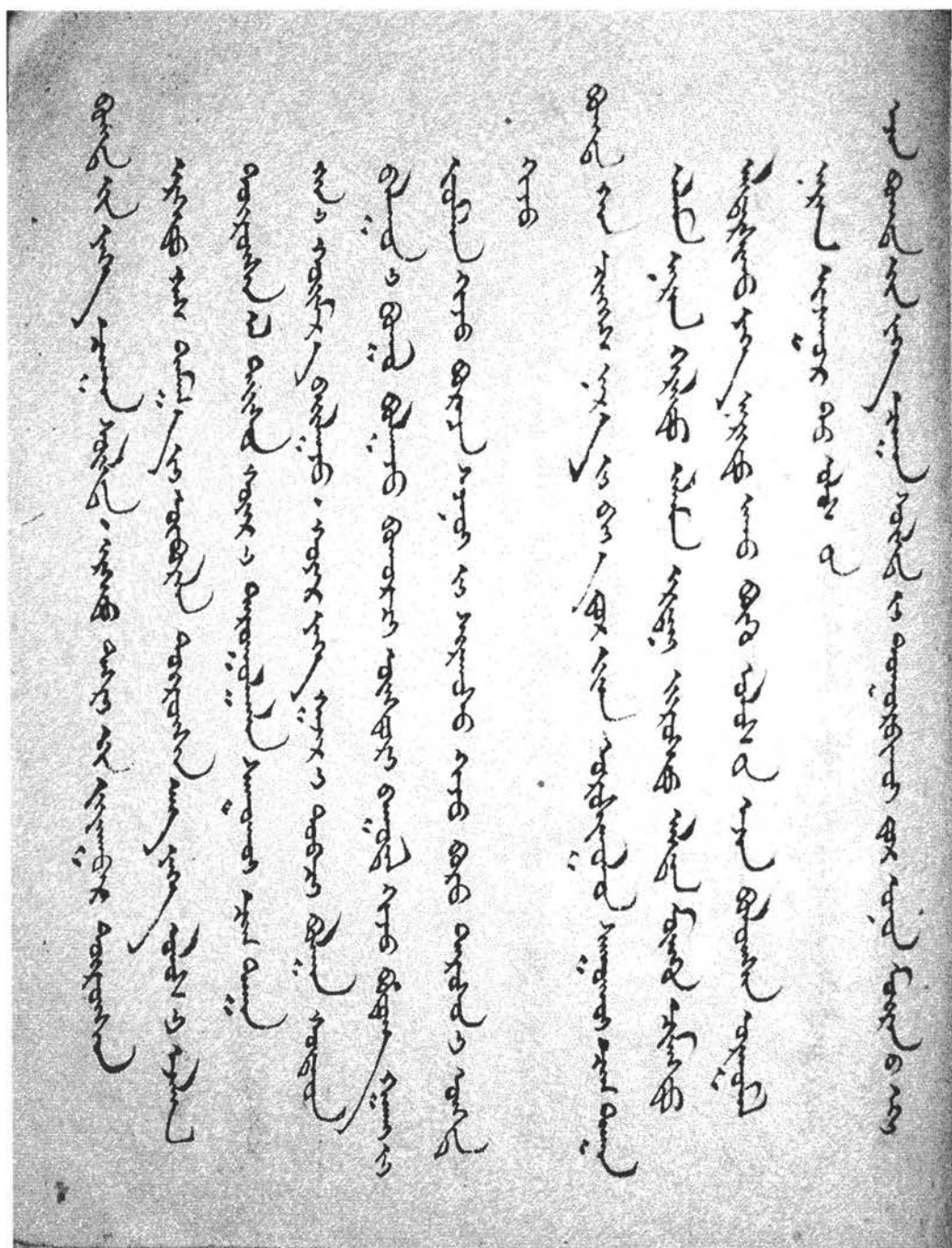


[illegible]

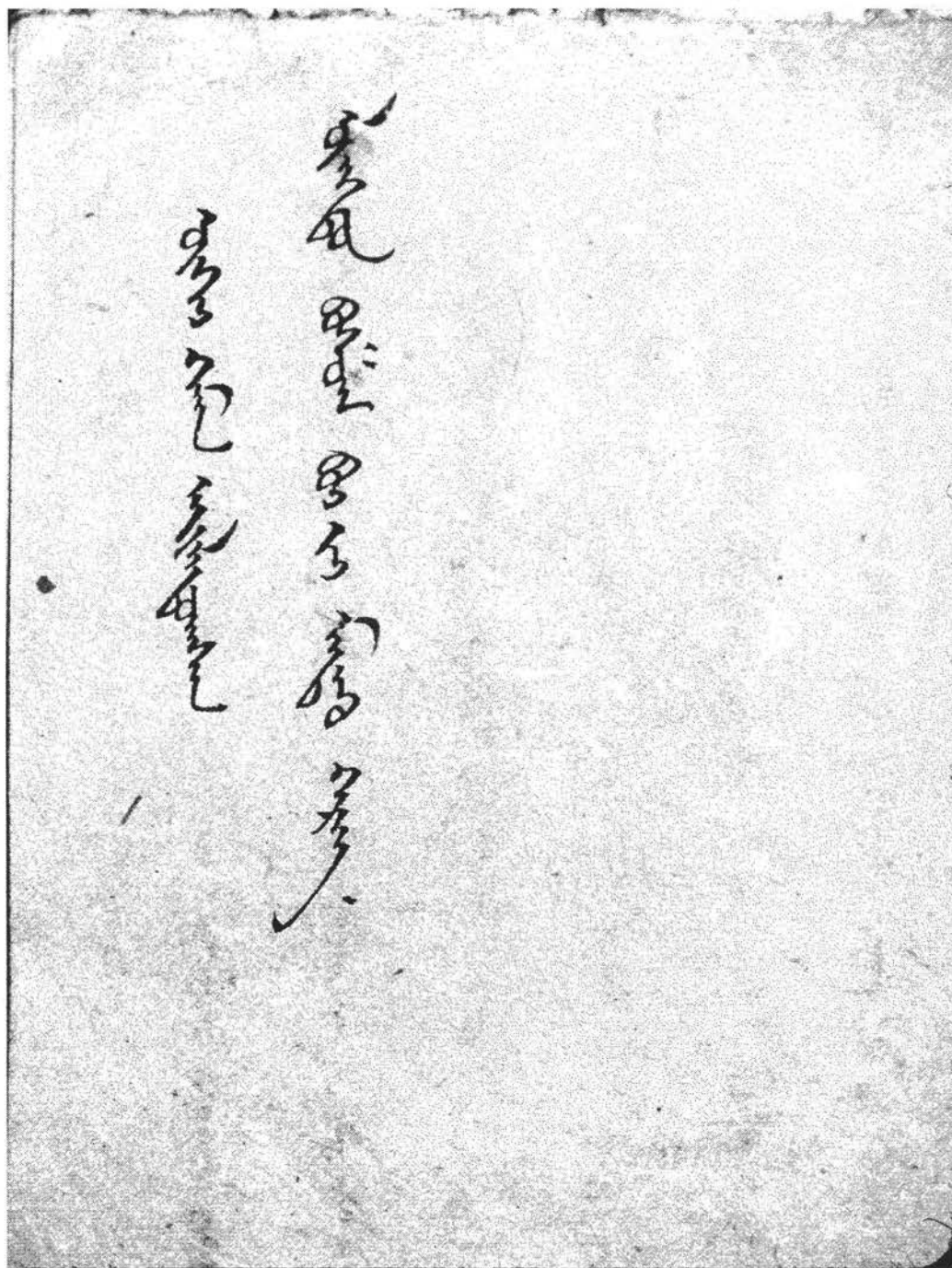
[illegible]

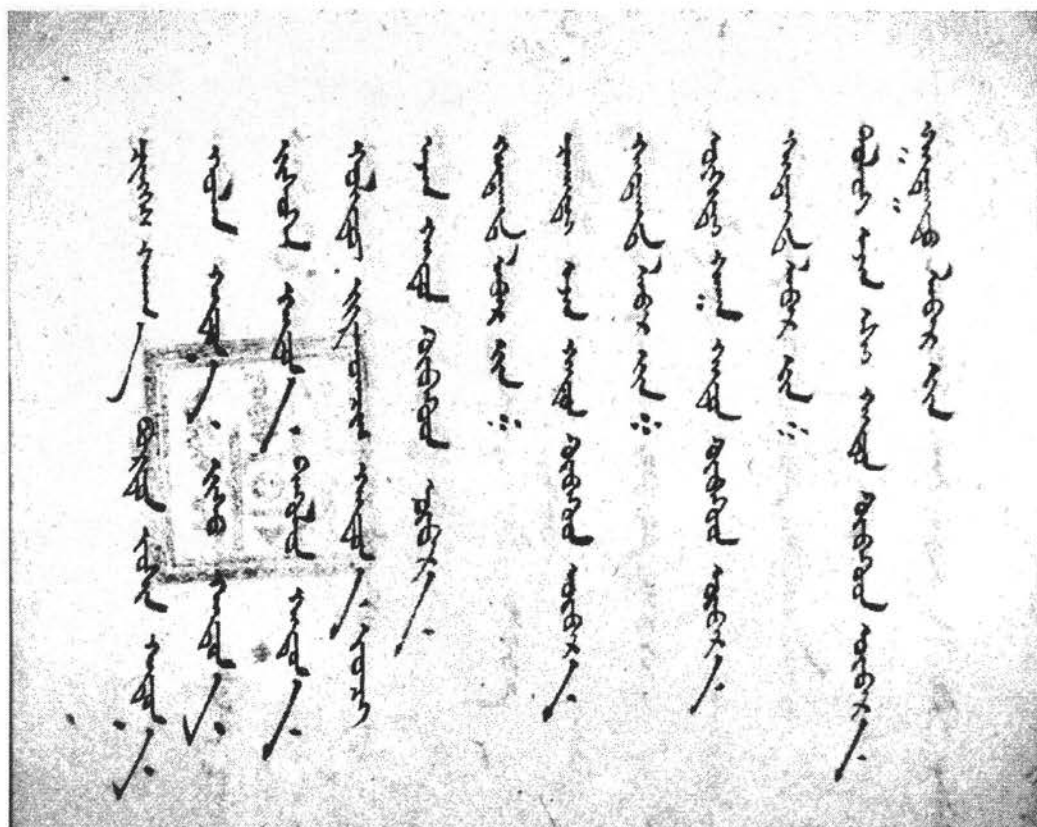


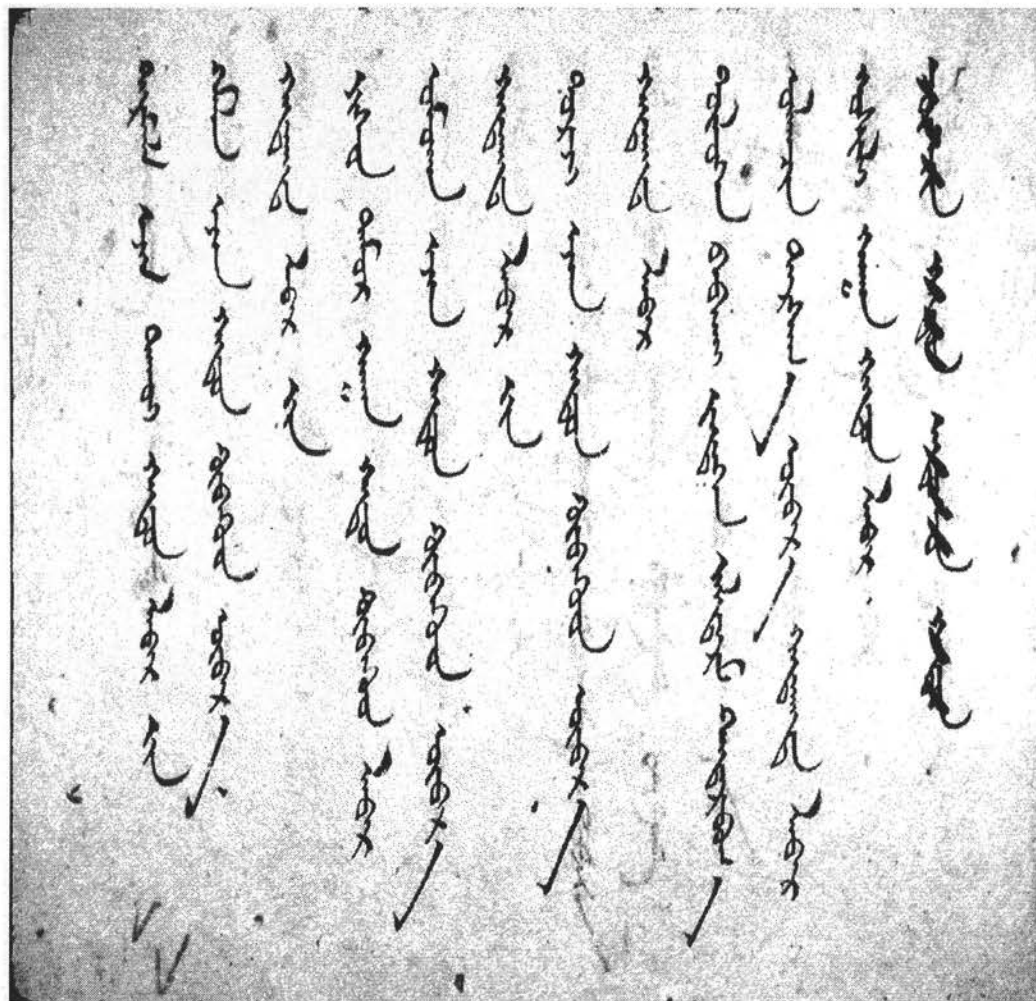


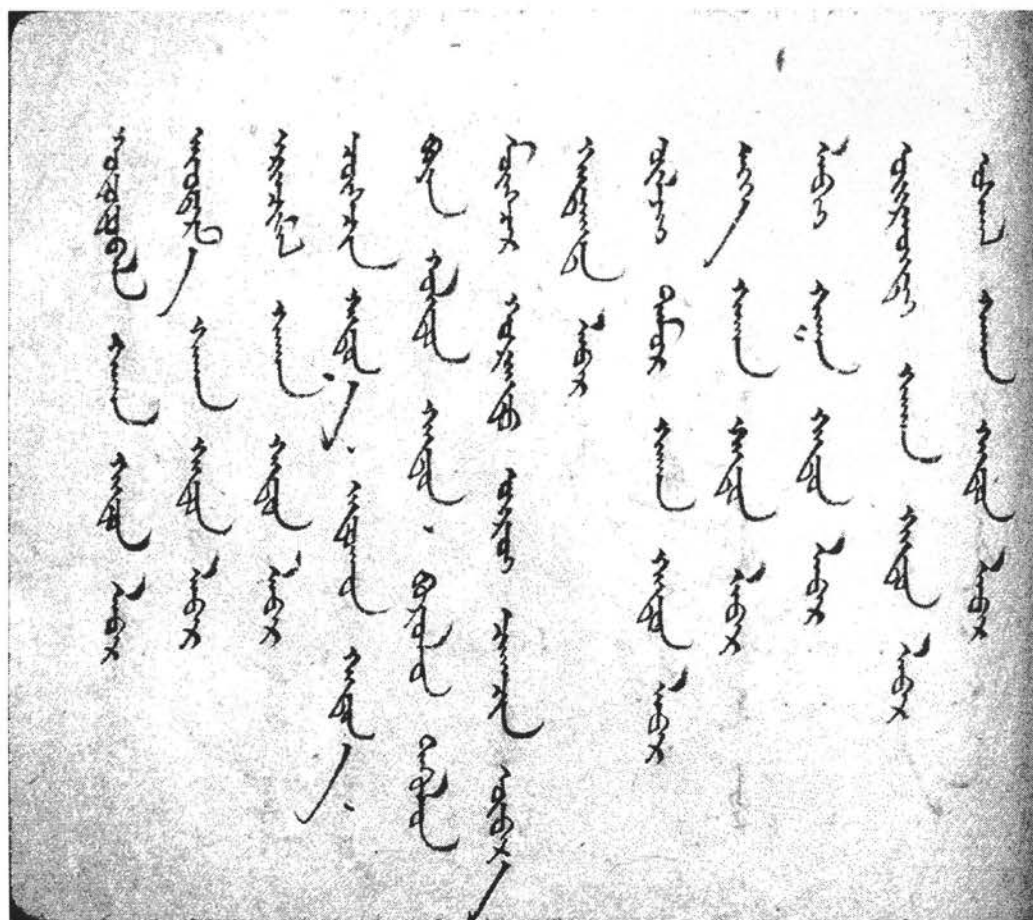


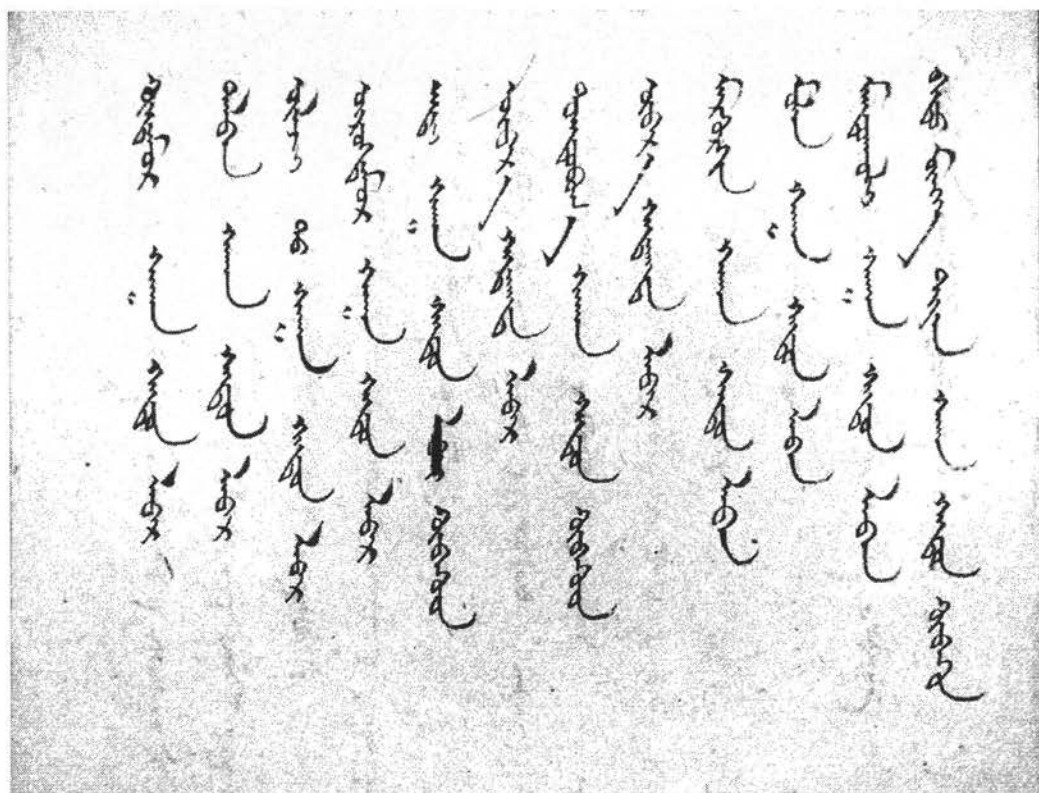
[illegible]

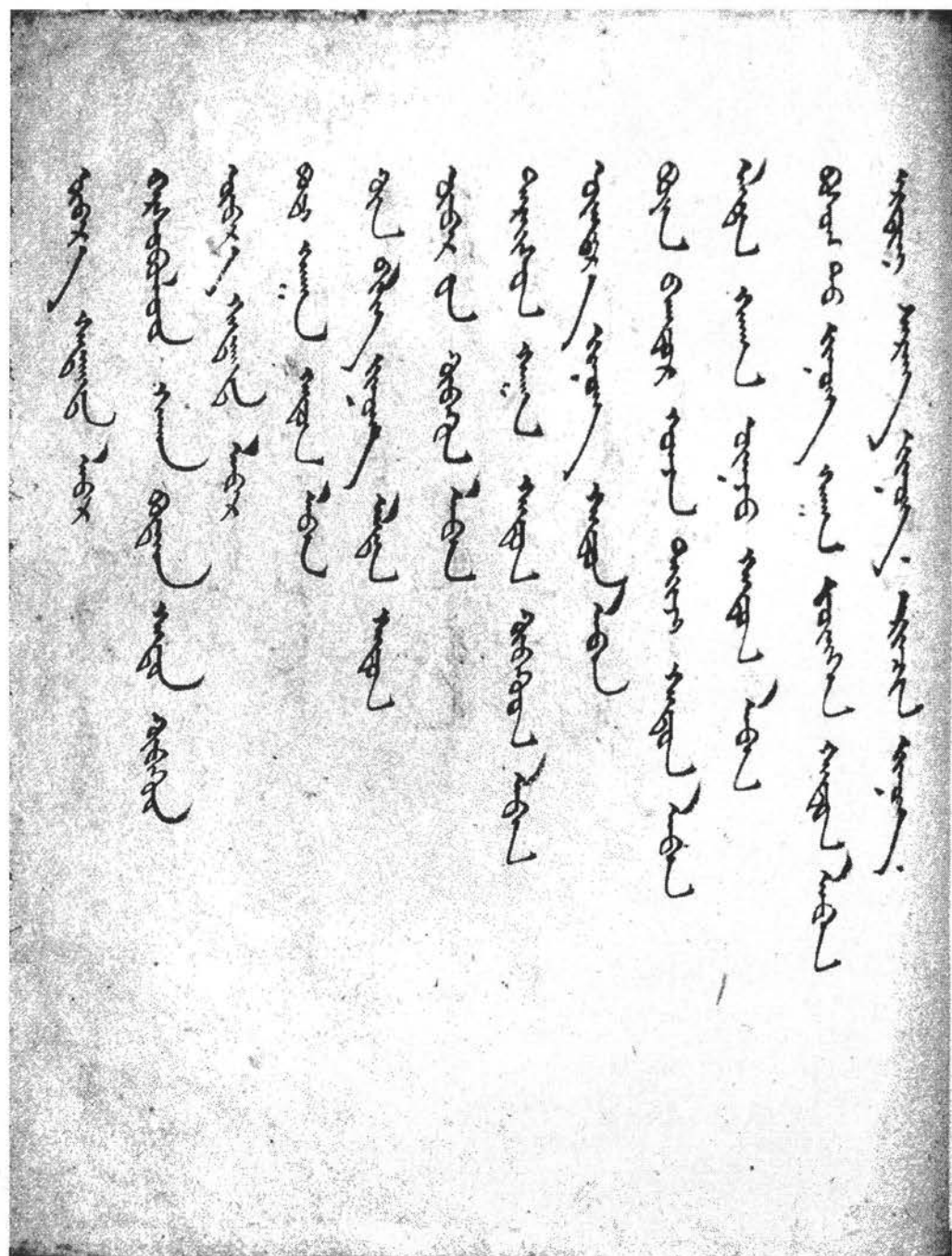


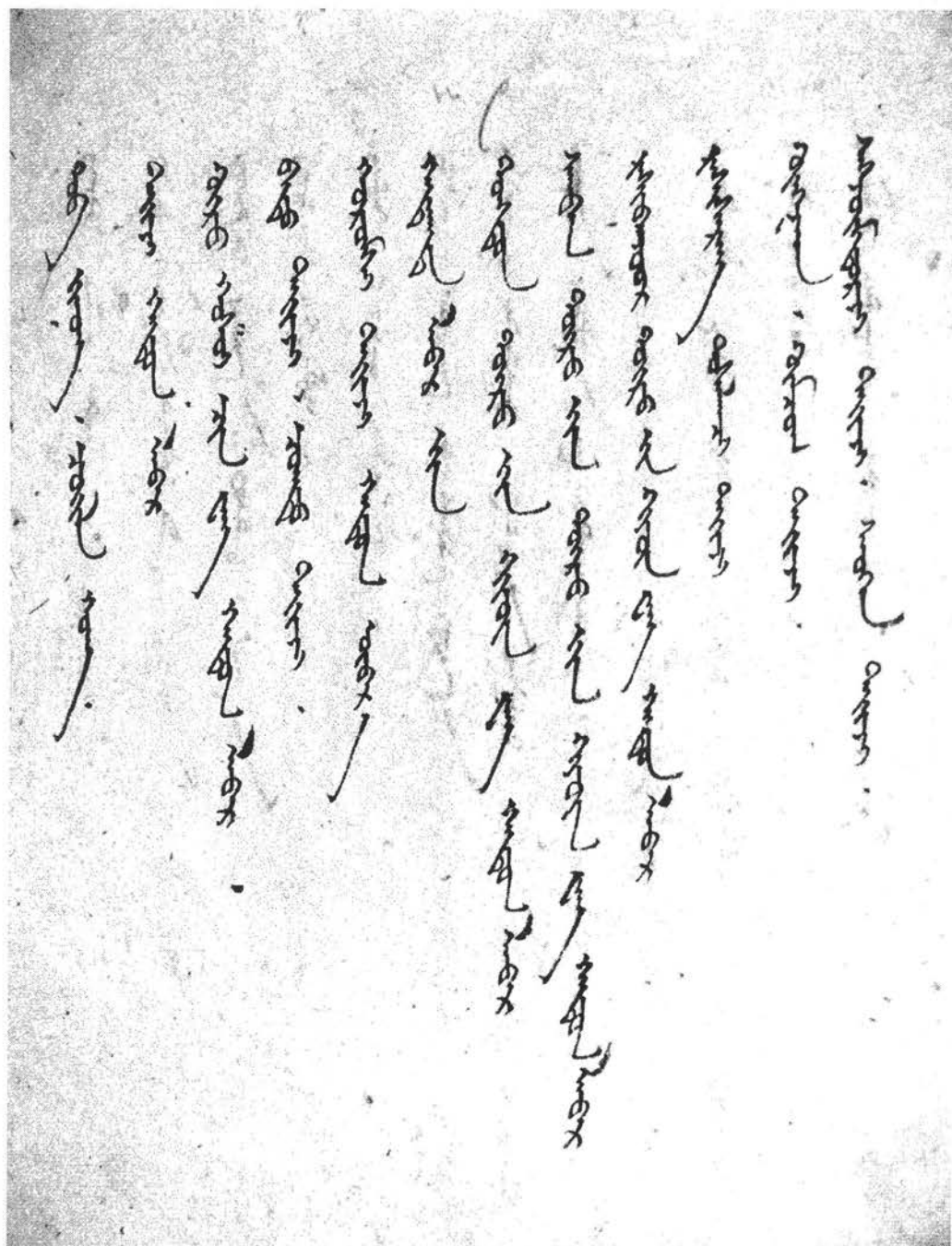


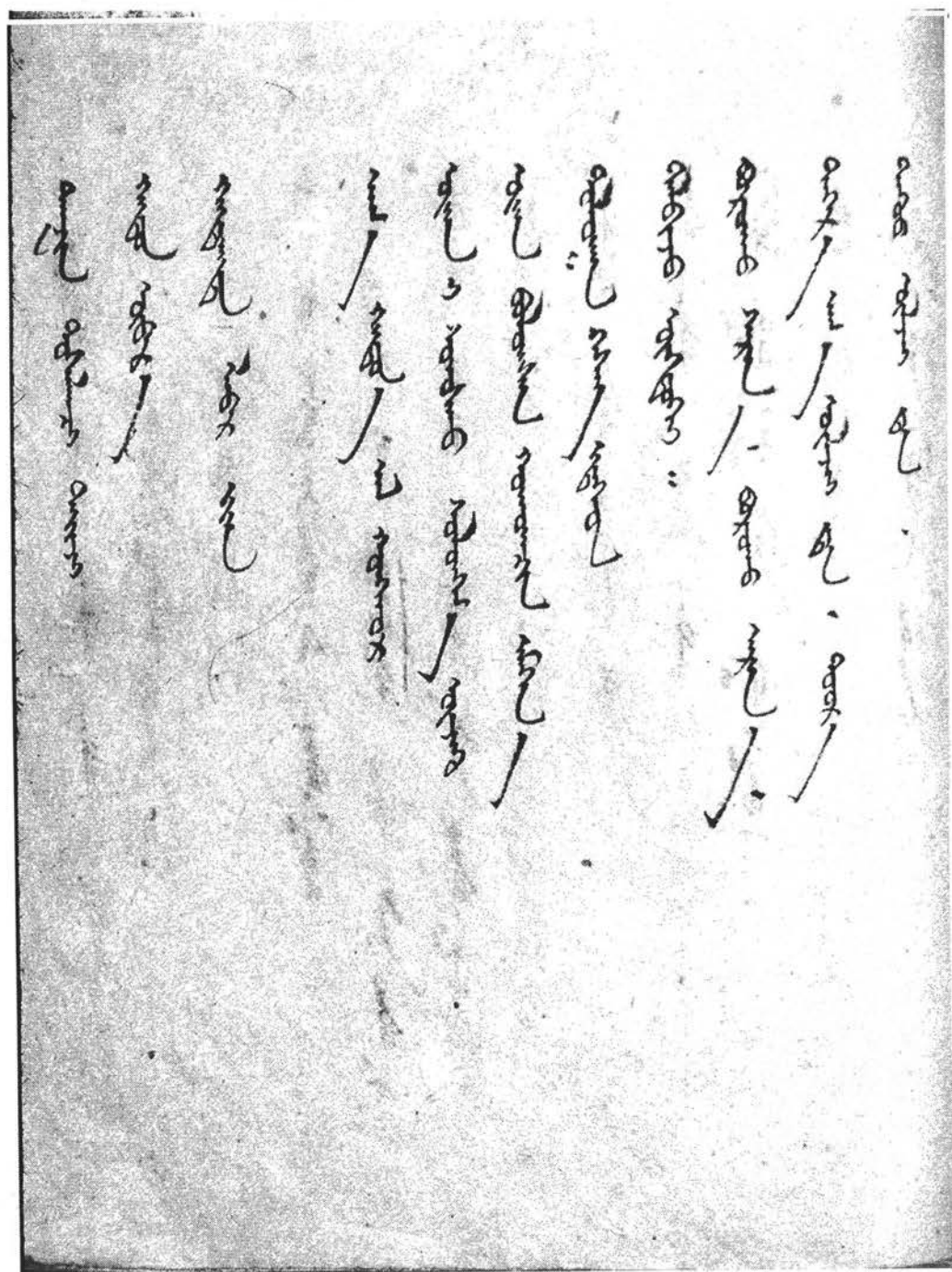


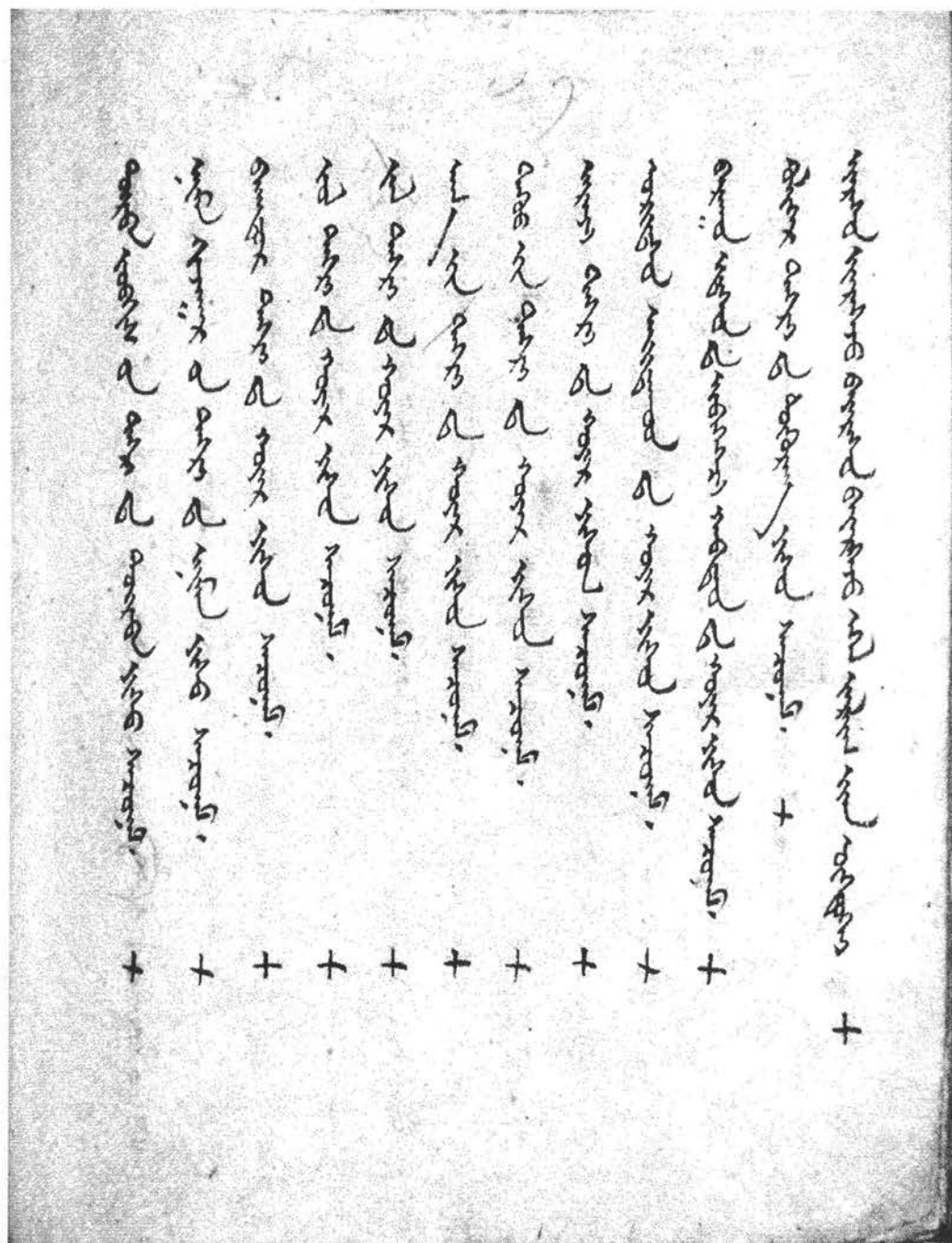


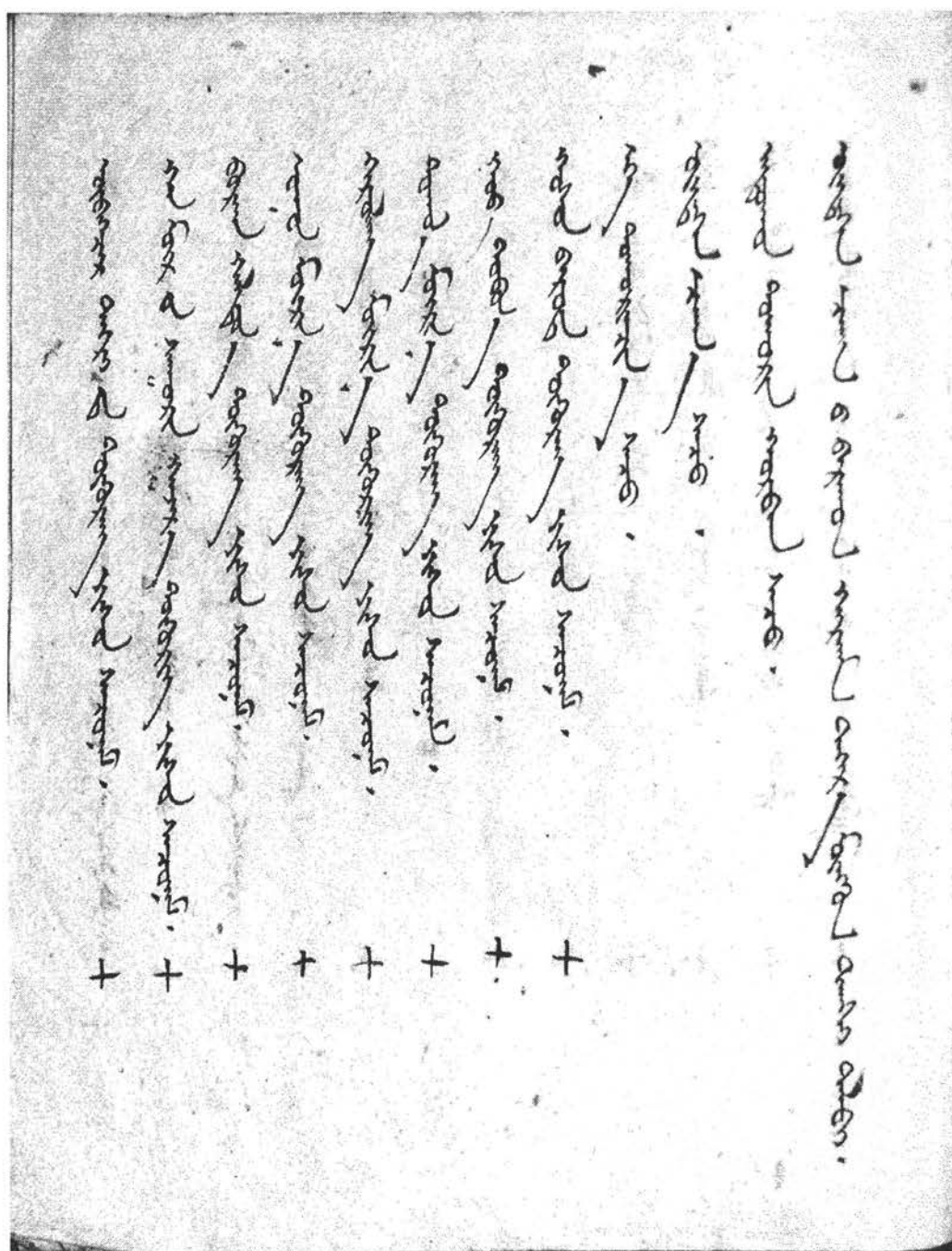


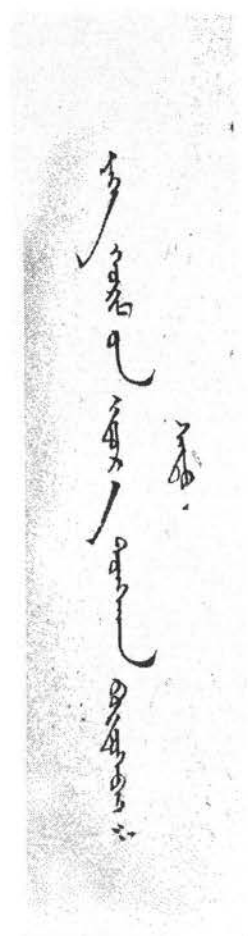






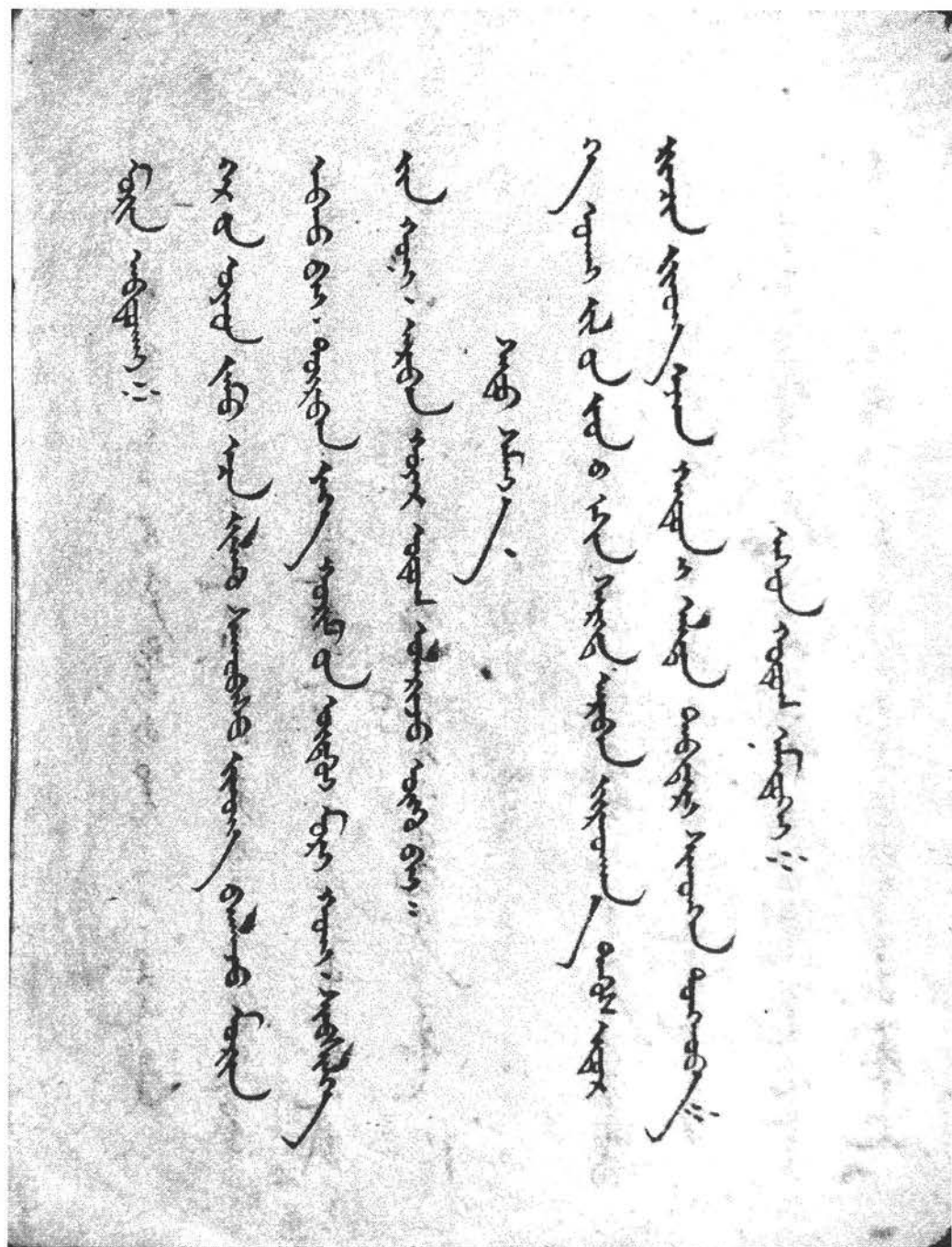


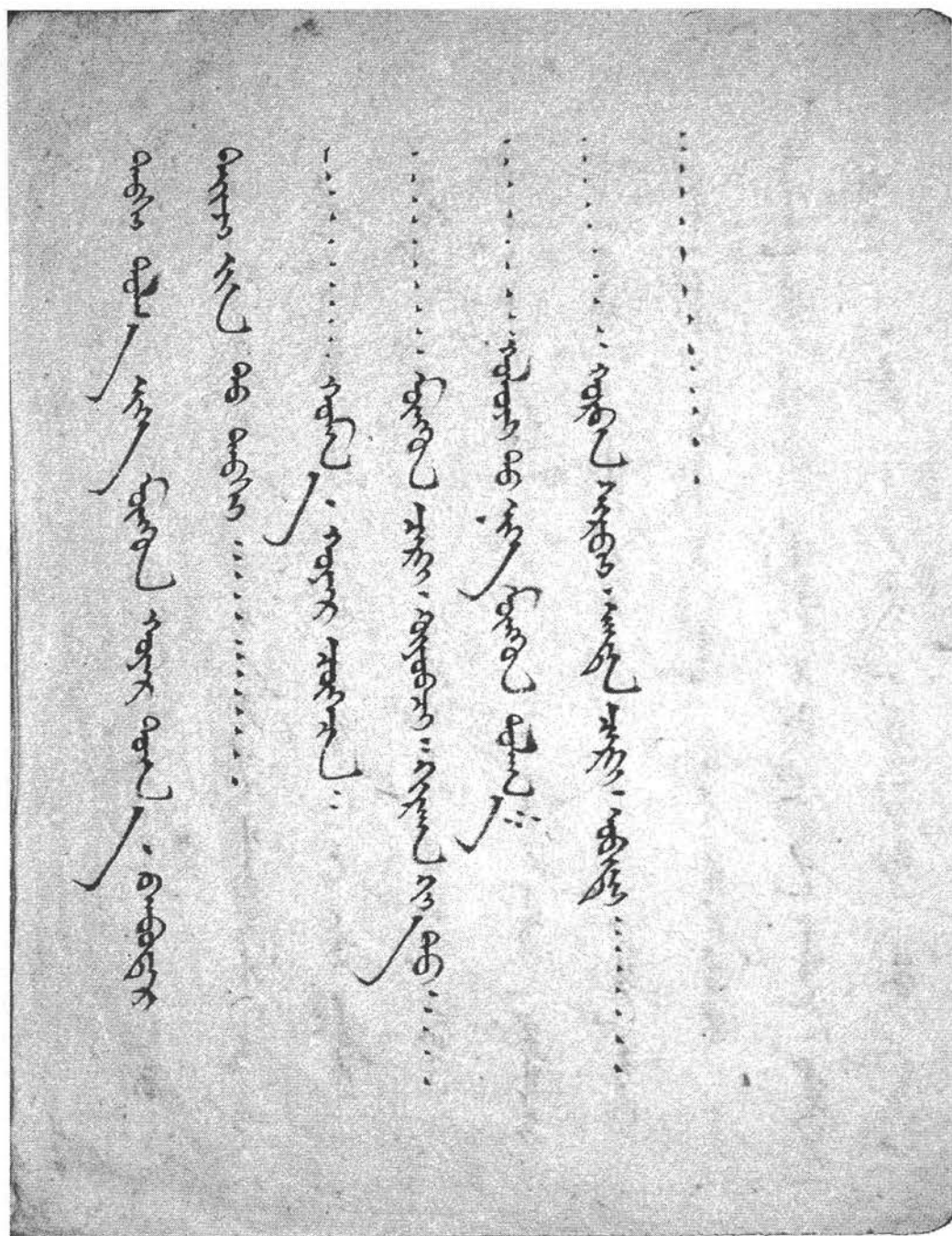




[illegible]

[Handwritten Japanese calligraphy]





(Faint handwritten Japanese text, likely bleed-through from the reverse side)