

## Reinforcement of fiberboard containing lingo-cellulose nanofiber made from wood fibers

|       |   |
|-------|---|
| メタデータ | 言語: eng<br>出版者:<br>公開日: 2017-09-11<br>キーワード (Ja):<br>キーワード (En):<br>作成者: Kojima, Yoichi, Kawabata, Ayaka, Kobori,<br>Hikaru, Suzuki, Shigehiko, Ito, Hirokazu, Makise, Rie,<br>Okamoto, Masaki<br>メールアドレス:<br>所属: |
| URL   | <a href="http://hdl.handle.net/10297/10383">http://hdl.handle.net/10297/10383</a>   |

## **Title page**

### **Manuscript title:**

Reinforcement of fiberboard containing lingo-cellulose nanofiber made from wood fibers

### 5 **Type of article:**

Original article

### **Author, Affiliation**

Yoichi KOJIMA, Faculty of Agriculture, Shizuoka University

Ayaka KAWABATA, Faculty of Agriculture, Shizuoka University

10 Hikaru KOBORI, Faculty of Agriculture, Shizuoka University

Shigehiko SUZUKI, Faculty of Agriculture, Shizuoka University

Hirokazu ITO, Toclas Corporation

Rie MAKISE, Toclas Corporation

Masaki OKAMOTO, Toclas Corporation

### 15 **Corresponding author**

#### **Name/ Affiliation/ Tel/ Fax/ E-mail**

Yoichi KOJIMA

Faculty of Agriculture, Shizuoka University

054-238-4856 (Tel & Fax)

20 aykojim@ipc.shizuoka.ac.jp

### **Key words**

wood-based materials, fiberboard, cellulose nanofiber, ligno-cellulose nanofiber, wet pulverize

## Abstract

Wood-based materials are fabricated with adhesives composed of various materials derived from fossil fuels. It is difficult to identify replacements for these chemical adhesives. This study explored nanofiber technologies as an alternative to these adhesives. In this study, we focused on reinforcement effects of lingo-cellulose nanofiber (LCNF) on fiberboards made from softwood and hardwood fiber. We discuss the density effects of reinforcement with LCNF because the density of medium density fiberboard (MDF), which is widely used for construction, is standardised at about 0.60–0.80 g/cm<sup>3</sup>. Fiberboards were manufactured with three densities (0.60, 0.75, 1.00 g/cm<sup>3</sup>). For softwood fiberboards, the bending properties for LCNF mixed boards were higher than those for the control fiberboards at all densities. In this paper, control fiberboard means fiberboard with fiber only. For hardwood fiberboards, the bending properties for LCNF mixed fiberboard for 1.00g/cm<sup>3</sup>-density board were higher than those for the control fiberboard. For internal bond strength (IB), the IB for LCNF mixed fiberboard was higher than that for the control fiberboard. The thickness swelling (TS) and weight change (WC) with water absorption for fiberboards containing LCNF were lower than those for control fiberboards. As a conclusion, physical and mechanical properties of the resulting fiberboards were significantly improved with the addition of LCNF, especially for softwood fiberboards, due to close binding between LCNF and wood fibers.

## **Text**

### **Introduction**

Wood-based materials are used extensively in residential construction, particularly in Japan. These materials could be made from virgin wood, recycled wood, unused wood species, or thinning wood. Many of the materials are fabricated with various adhesives. Most currently available wood adhesives, such as formaldehyde-based resins, vinyl acetate resins, and isocyanate-based resins, are composed of various materials derived from fossil fuels. Synthetic adhesives are usually non-biodegradable constituents, and they might cause health and environmental problems. Moreover, the cost of wood-based materials might increase due to extensive use of these adhesives.

The demand for wood-based materials for use in constructions is expected to increase. Identifying replacements for these chemical adhesives poses major challenges. The global focus on sustainability demands the development of novel, natural adhesives that do not depend on fossil fuels or synthetic chemicals. Some projects have focused on developing natural, material-based wood adhesives using bio-resources. For example, some natural adhesives are composed of citric acid [1-4] or lactic acid [5, 6], but these have not been put to practical use.

In this study, we explored options involving nanofiber technology. Nanotechnology has been developing rapidly in many fields. In general, the term nanofiber refers to a nano-sized fiber and is defined as a fibrous material with a diameter of about 1–100 nm and a length more than 100 times the diameter. A fiber that has a surface and inner structure controlled at the nanoscale is called a nano-structured fiber [7]. This is true even for fibers that have diameters exceeding 100 nm.

There are many types of nanofibers. Cellulose nanofiber (CNF), particularly, has

received attention in numerous fields worldwide. Over a trillion tons of CNF exist worldwide. CNF is known to have better physical and mechanical properties than most other fibers [8]. Developing new materials that incorporate CNF is a high priority [9-13]. Moreover, lingo-cellulose nanofiber (LCNF), which is pulverized from wood, is also  
5 expected to be applicable in many fields. However, the use of CNF technology in wood-based materials has not been reported.

In a previous study, we investigated the effects of adding CNF to wood flour [14]. The resulting properties of the CNF/wood flour boards were evaluated, with a focus on the binding effects of CNF. We observed that wet ball milling of commercial cellulose  
10 powder led to the formation of nanostructured fibers with nano-sized surface fibrils. Moreover, the physical and mechanical properties of the wood flour boards were significantly enhanced by the addition of CNF due to three-dimensional binding between CNF and wood flour.

In other studies, LCNF was made from wood flour using a disk mill [15] and a ball  
15 mill [16]. In this context, CNF refers to nanofibers made from cellulose alone. In terms of reinforcement of wood flour, CNF is better than LCNF. However, in terms of productivity, LCNF is better than CNF because the latter requires much processing, including delignification. Thus, we employed LCNF. The fabrication of LCNF by disk milling and ball milling is simple and effective, and its incorporation into wood flour  
20 board significantly enhances the physical and mechanical properties of the board.

In the above reports, CNF and LCNF effects on wood flour board are discussed. Wood flour board is the simplest material among wood-based materials, but wood flour boards are not of practical use. Therefore, to develop our research on binding effects of CNF and LCNF on wood-based materials, we thought that a practical application to

wood-based material used in residential construction was actually very important. For this reason, we focused on fiberboards.

Fiberboards are fibrous panels made up of lignocellulosic materials joined with a synthetic binder. Fiberboards are classified based on density as high-density fiberboard (hardboard), medium-density fiberboard (MDF), and low density fiberboard (insulation board). In particular, MDF is an important fiberboard used for residential construction and furniture worldwide. Urea–formaldehyde (UF) and phenol–formaldehyde (PF) are common resins that are used in fiberboard manufacturing because they are less expensive compared to other adhesives. However, formaldehyde emission is one of the most important disadvantages of these resins, as this could potentially cause health and pollution problems. Instead, binderless boards are wood-based composites consisting of particles of lignocellulosic material bonded without additional resin.

Recently, there has been a growing request for binderless boards. To meet the market demand and respect the environment, several studies have been performed to convert fiberboards into binder-free fiberboards using methods such as thermotreatments [17-19], the addition of soybean protein [20], pretreating fibers with white-rot fungus [18], and the addition of lignin [21, 22]. Results from studies on the relationship between fiber shape and mechanical properties for medium-density fiberboard (MDF) have been reported [23-25], but there has been no mention of nano-order fiber.

In this study, we focused on the reinforcement effects of LCNF on fiberboards made from softwood and hardwood fiber. Moreover, we discuss the density effect of reinforcement with LCNF.

## **Materials and Methods**

### *Materials*

Softwood and hardwood fiber for MDF raw materials were used both as a base material for fiberboards and as a material for LCNF. The average fiber lengths were 2.27 mm (softwood) and 0.87 mm (hardwood).

5

### *Pulverization of fiber to make LCNF*

Fibers (13.5 g, air-dry weight) were mixed with distilled water (200 g) and pulverized using a ball mill (Pulverizette 5; Fritsch Japan Co., Ltd., Japan). In this study, the time and rotational rate of the ball mill were fixed at 4 h and 200 rpm, respectively. Two LCNF slurries made from softwood and hardwood fibers were prepared and tested. Two slurries made from both unpulverized fibers served as the control. LCNF size after pulverization was measured with a laser diffraction particle size distribution analyser (Partica LA-950; Horiba, Ltd., Kyoto, Japan).

To prevent flocculation, the LCNF slurry was replaced with alcohol. Samples were then freeze dried, and LCNF powder was produced. The surface morphology of the LCNF and unpulverized fiber were observed with a scanning electron microscope (SEM) (JSM-6510LV2; JEOL, Ltd., Japan).

### *Fabrication of fiberboard with LCNF*

Fiberboards were made from a mixture of fibers and the LCNF slurry. Hardwood fiberboard was made from a mixture of hardwood fibers and the LCNF pulverized hardwood fiber. Softwood fiberboard was made from a mixture of softwood fiber and the LCNF pulverized softwood fiber. We observed the effects of LCNF on the physical and mechanical properties of fiberboards. A single composition (80 wt% fiber + 20 wt%

LCNF) was examined. Fiber (54 g dry weight) was mixed with an LCNF slurry (LCNF 13.5 g + distilled water 200 g) in a polyethylene bag. The moisture content of the mixture was over 300%.

If hot pressing occurred without desiccation, it was difficult to safely make  
5 fiberboard. When the mat moisture content was over 300%, it was impossible to  
produce uniform boards because excessive steam pressure would accumulate, and  
moisture inside the mat would not completely evaporate during hot pressing, causing  
the mat to burst. Therefore, the mixture was compounded and dried with a  
compounding machine with vacuum drying function (Trimix, Inoue Mfg., Inc, Japan) to  
10 less than 30% moisture content. Compounding and drying were performed at 40 rpm  
and 80°C for 15 min. The compounding machine was applied to mix the LCNF and  
wood fiber homogeneously and extract water from each compound.

As a next step, a hand-formed mat (15 × 15 cm) was made using a metal frame.  
Wire screens (100 meshes) were placed on the upper and lower surfaces of the mat to  
15 accelerate water transfer during hot pressing. The mats were pressed for 10 min at  
120°C and 0.85 MPa using a hot press (Tabletop Test Press SA-302; Tester Sangyo Co.,  
Ltd., Japan). In this study, to discuss the reinforcement effect of LCNF on board  
densities, three different board densities (0.60, 0.75, and 1.00 g/cm<sup>3</sup>) were selected.  
Board densities were controlled by board thickness. Fiberboards (15 cm × 15 cm × 0.5  
20 cm) were manufactured with a target density of 0.60 g/cm<sup>3</sup>. For target densities of 0.75  
and 1.00 g/cm<sup>3</sup>, board thickness was set at 0.4 and 0.3 cm, respectively.

For all experiments, two fiberboards were produced at each density. All boards were  
conditioned at 20°C and 65% relative humidity for at least 2 weeks before testing. No  
adhesives were used. The boards for the control were also produced using untreated



fiber.

### *Physical testing*

After conditioning, four  $12 \times 2.5$  cm pieces were cut from each board for use in a  
5 three-point bending test with a universal testing machine. The following conditions  
were imposed: span of 10 cm, loading speed of 3 mm/min. The modulus of rupture  
(MOR) and modulus of elasticity (MOE) were calculated.

After the bending test, two pieces ( $2.5 \times 2.5$  cm) were cut from edge parts of the  
bending test specimen for internal bond strength (IB) and water adsorption tests, The IB  
10 test was performed under a loading speed of 3 mm/min. Water adsorption was  
determined by measuring the change in weight and thickness of the pieces before and  
after soaking in water at 20°C for 24 hours. Eight samples were used at each test.

## **Results and Discussion**

### 15 *Evaluation of LCNF structure*

The sizes of the control (unpulverized fibers) for softwood and hardwood fiber were  
2.27 and 0.87 mm, respectively. After ball milling, the softwood and hardwood fiber  
sizes were 26.3 and 22.9  $\mu\text{m}$ , respectively. Although the softwood fiber was 2.5 times  
longer than the hardwood fiber for the control, the sizes of both LCNF samples were  
20 almost identical after pulverising at 200 rpm for 4 hours. Figure 1 shows the size  
distributions of the LCNFs. The size distributions for both LCNFs were almost identical.  
This means that both types of fibers were sufficiently pulverized, regardless of the size  
before pulverising, demonstrating that it is possible to control the size uniformity of  
LCNF by adjusting the settings of the ball mill. The peaks for both fibers are shown in

two parts. Smaller peaks (0.1–1  $\mu\text{m}$ ) were obtained from the small fibril formed by wet ball milling peeled from the surface of wood fiber.

The morphology of LCNF was studied with SEM photographs. Figures 2 and 3 show SEM photographs of the softwood and hardwood fibers before and after ball milling (200 rpm/4 h). The surfaces of the untreated fiber were very smooth, whereas rougher surfaces were observed for the ball-milled fibers. Nanostructured fibers with nanoscale surface fibrils were formed on the surface of the fiber after ball milling. LCNFs made from both softwood and hardwood fiber showed the same surface structure. We have confirmed that the sizes of CNF and LCNF nanofibrils made by ball milling are the same [14, 16].

#### *Binding effect of LCNF in fiberboard*

A compounding machine was used in the mixing process. LCNF and wood fiber were mixed simultaneously during the drying process. Figure 4 shows the manufactured boards in this study. A compounding machine was applied to mix the LCNF and wood fiber homogeneously and extract water from each compound. As shown in this figure, the use of a compounding machine made it possible to produce fiberboards of uniform quality. The marks from wire screen were not recognized, and no surface sanding was conducted.

Table 1 shows the measured board densities. All fiberboards with LCNF had somewhat higher density than the target (Table 1). Moreover, some fiberboards without LCNF had a lower density than the target. This is the reason that the thickness of fiberboard without LCNF was recovered during conditioning, so the board density became lower than the targeted value. In our previous reports, the same phenomena

were observed for the CNF/wood and LCNF/wood flour mixed boards [14, 16]. According to the JIS standard (JIS A 5905) [26], fiberboards are classified based on density as hard fiberboards (hardboard, density  $\geq 0.80 \text{ g/cm}^3$ ), MDF (density  $0.35\text{--}0.80 \text{ g/cm}^3$ ), and insulation fiberboards (insulation board, density  $\leq 0.35 \text{ g/cm}^3$ ). The densities measured in this study were MDF and Hardboard.

Because there was a difference between the control and LCNF mixed board densities, the discussion about comparison of some mechanical properties between control and LCNF mixed fiberboard board was conducted as specific mechanical properties (Table 1).

Figures 5 and 6 show the bending properties (specific modulus of rupture [MOR/ $\rho$ ] and specific modulus of elasticity [MOE/ $\rho$ ]) of fiberboards made from softwood and hardwood fiber containing LCNF. Bending properties tended to increase with increasing board density for both control fiberboards and LCNF mixed fiberboard. For softwood fiberboards, the bending properties for LCNF mixed fiberboards were higher than those for the control fiberboard at all densities. On the other hand, for hardwood fiberboards, the bending properties for LCNF mixed fiberboard for  $1.00 \text{ g/cm}^3$ -density board were higher than those for the control fiberboard. In general, the quality of composite properties mixed with smaller size particles was not improved [27]. Nevertheless, in this study, the properties of fiberboards made with LCNF were much improved compared to wood fiber only. As a result, the nano-sized fibril effectively trapped wood fibers. In our previous studies [14-16], we confirmed the reinforcement effect of LCNF on wood flour board and high board density ( $1.00 \text{ g/cm}^3$ ). In this report, we could confirm the application of LCNF to fiberboard at three different board densities. The mechanism of bond performance development is thought to be due to the mechanical entanglement

between LCNF and fiber associated with water evaporation during hot pressing. Because the other possibilities were supposed, they should be discussed in our next papers.

Figure 7 shows the internal bond strength (IB) of fiberboards containing LCNF. Comparing softwood and hardwood fiber, the IB values for hardwood fiberboard with and without LCNF were greater than those for softwood, though the mechanical entanglement among short fibers became weaker than for long fibers generally. Moreover, the IB tended to increase with increasing board density for the LCNF mixed fiberboard. For all densities, the IB for LCNF mixed fiberboard was higher than that for the control fiberboard. For the control fiberboard, neither LCNF nor adhesives were used. Because the thickness of the control fiberboard was recovered during conditioning, the IB value became very small. On the other hand, the thickness of the LCNF mixed fiberboard was not changed during conditioning, so the IB value was much higher. This is the reason that the nano-sized fibril effectively trapped wood fibers. From these results, the IB value was improved by adding LCNF to fiberboard. Moreover, the reinforcement effect of LCNF was confirmed at all board densities.

Figures 8 and 9 show the degrees of thickness swelling (TS) and weight change (WC) in the wood fiber/LCNF composites with water absorption. As compared with softwood and hardwood fiberboards, the TS and WC for hardwood fiberboard with and without LCNF were lower than those for softwood fiberboards. The TS and WC values for fiberboards containing LCNF were lower than those for boards with fiber only. Nano-sized fibrils formed at the fiber surface during the process of mixing LCNF with wood fiber resulted in close binding of the two components. As a result, water was not as easily able to enter the composite. Thus, incorporation of LCNF improved water

resistance.

## Conclusions

In this report, we discussed the reinforcement effect of LCNF in fiberboards, especially  
5 in relation to board density. Wet ball milling of both softwood and hardwood fibers  
resulted in the formation of nano-structured fibers with nano-sized surface fibrils. A  
reliable and safe method presented in our previous report of manufacturing wood flour/  
LCNF boards could be applied to fiberboards. Physical and mechanical properties of the  
10 resulting fiberboards were significantly improved with the addition of LCNF, especially  
softwood fiberboards, due to close binding between LCNF and wood fibers. Moreover,  
the reinforcement effect of LCNF on fiberboards was confirmed at three different board  
densities. As the next steps, we would evaluate the reinforcement effect of LCNF on  
fiberboards in relation to LCNF size and LCNF/wood fiber composition.

## 15 References

1. Umemura K, Ueda T, Kawai S (2011) Characterization of wood-based molding with  
citric acid. *J Wood Sci* 58:38-45
2. Umemura K, Ueda T, Sasa SM, Kawai S (2012) Application of citric acid as natural  
adhesive for wood. *J Appl Polym Sci* 123:1991-1996
- 20 3. Umemura K, Ueda T, Kawai S (2012) Effects of molding temperature on physical  
properties of wood-based molding bonded with citric acid. *For Prod J* 62:63-68
4. Umemura K, Sugihara O, Kawai S (2013) Investigation of a new natural adhesive  
composed of citric acid and sucrose for particleboard. *J Wood Sci* 59:203-208
5. Ikeda K, Takatani M, Sakamoto K, Okamoto T (2008) Development of fully

- bio-based composite: wood/cellulose diacetate/poly(lactic acid) composite.  
Holzforshung 62:154-156
6. Takatani M, Ikeda K, Sakamoto K, Okamoto T (2008) Cellulose esters as compatibilizers in wood/poly (lactic acid) composite. *J Wood Sci* 54(1):54-61
  - 5 7. Kondo T (2008) New aspects of cellulose nanofiber (in Japanese). *Mokuzai Gakkaishi* 54:107–115
  8. Yano H (2007) New developments in bio-based materials (in Japanese). CMC Publishing Co., Ltd., Chiyoda, pp 63-70
  9. Lee S, Ohkita T (2003) Mechanical and thermal flow properties of wood flour  
10 biodegradable polymer composites. *J Appl Polym Sci* 90(7): 1900-1905
  10. Nakagaito AN, Yano H (2005) Novel highstrength biocomposites based on microfibrillated cellulose having nano-order-unit weblike network structure. *Appl Phys A* 80(1):155-159
  11. Okubo K, Fujii T, Yamashita N (2005) Improvement of interfacial adhesion in  
15 bamboo polymer composite enhanced with microfibrillated cellulose. *JSME Int J Ser A* 48(4):199-204
  12. Abe K, Iwamoto S, Yano H (2007) Obtaining cellulose nanofibers with uniform width of 0.15 nm from wood. *Biomacromolecules* 8(10):3276-3278
  13. Sehaqui H, Allais M, Zhou Q, Berglund LA (2011) Wood cellulose biocomposites  
20 with fibrous structure at micro-and nanoscale. *Comp Sci Technol* 71(3):382-387
  14. Kojima Y, Minamino J, Isa A, Suzuki S, Ito H, Makise R, Okamoto M (2013) Binding effect of cellulose nanofibers in wood flour board. *J Wood Sci* 59(5):396-401
  15. Kojima Y, Isa A, Kobori H, Suzuki S, Ito H, Makise R, Okamoto M (2014) Evaluation of binding effects in wood flour board containing lingo-cellulose

nanofibers. *Materials* 7:6853-6864

16. Kojima Y, Ishino A, Kobori H, Suzuki S, Ito H, Makise R, Higuchi I, Okamoto M (2015) reinforcement of wood flour board containing lingo-cellulose nanofiber made from recycled wood. *J Wood Sci* 61(5):492-499
- 5 17. Halvarsson S, Edlund H, Norgren M (2009) Manufacture of non-resin wheat straw fiberboards. *Ind Crops Prod* 29(2-3):437-445
18. Wuzella G, Mahendran AR, Batge T, Jury S, Kandelbauer A (2011) Novel, binder-free fiber reinforced composites based on a renewable resource from the reed-like plant *Typha* sp. *Ind Crops Prod* 33(3):683-689
- 10 19. Baskaran M, Hashim R, Said N, Raffi SM, Balakrishnan K, Sudesh K, Sulaiman O, Arai T, Kosugi A, Mori Y, Sugimoto T, Sato M (2012) Properties of binderless particleboard from oil palm trunk with addition of polyhydroxyalkanoates. *Comp. Part B: Eng* 43(3):1109-1116
20. Li X, Li Y, Zhong Z, Wang D, Ratto JA, Sheng K, Sun XS (2009) Mechanical and  
15 water soaking properties of medium density fiberboard with wood fiber and soybean protein adhesive. *Bioresour Technol* 100(14):3556-3562
21. Mancera C, El Mansouri NE, Pelach MA, Francesc F, Salvado J (2012) Feasibility of incorporating lignins in fiberboards made from agricultural waste. *Waste Manage* 32(10):1962-1967
- 20 22. Sun YC, Lin Z, Peng WX, Yuan TQ, Xu F, Wu YQ, Yang J, Wang YS, Sun RC (2014) Chemical changes of raw materials and manufactured binderless boards during hot pressing: lignin isolation and characterization. *Bioresource* 9(1):1055-1071
23. Takahashi H, Endoh K, Suzuki H (1972) Studies on handling process of wood fiber

for dry processing of fiberboard. I. On particle size of ground fiber (in Japanese).  
Mokuzai Gakkaishi 18:9-13

24. Takahashi H, Endoh K, Suzuki H (1972) Studies on handling process of wood fiber  
for dry processing of fiberboard. II. Particle size distribution of ground wood fiber (in  
5 Japanese). Mokuzai Gakkaishi 18:15-19

25. Takahashi H, Endoh H, Ohsawa K, Moriyama M, Endoh K (1974) Effects of  
characteristics of fiber ground by refiner on physical properties of fiberboard. I.  
Shape of a fiber and mechanical strength of fiberboard (in Japanese). Mokuzai  
Gakkaishi 20:430-434

10 26. JIS A 5905 (2014) JIS standard specification for fiberboards. Japanese Standards  
Association, Tokyo

27. Ito H, Kumari R, Takatani M, Uchiyama M, Okamoto T, Hattori H, Fujiyoshi I (2008)  
Viscoelastic evaluation of effects of fiber size and composition on  
cellulose-polypropylene composite of high filler content. Polym Eng Sci 48:415-423

15

### **Figure and Table Captions**

Table 1

Fiberboard densities

20 Figure 1

Size distributions shown for softwood and hardwood fiber and LCNF

Figure 2

SEM micrographs of the surface morphology of (a) untreated softwood fiber and (b)  
25 LCNF (200 rpm/4 h) made from softwood fiber



Figure 3

SEM micrographs of the surface morphology of (a) untreated hardwood fiber and (b) LCNF (200 rpm/4 h) made from hardwood fiber

5

Figure 4

Manufactured board. (a) softwood fiberboard with LCNF, (b) hardwood fiberboard with LCNF

10 Figure 5

Specific modulus of rupture ( $MOR/\rho$ ) of fiberboards containing LCNF  
(a) softwood fiber, (b) hardwood fiber  
Vertical bars indicate standard deviations

15 Figure 6

Specific modulus of elasticity ( $MOE/\rho$ ) of fiberboards containing LCNF  
(a) softwood fiber, (b) hardwood fiber  
Vertical bars indicate standard deviations

20 Figure 7

Specific internal bond strength ( $IB/\rho$ ) of fiberboards containing LCNF  
(a) softwood fiber, (b) hardwood fiber  
Vertical bars indicate standard deviations

25 Figure 8

Thickness swelling (TS) with the water adsorption test  
(a) softwood fiber, (b) hardwood fiber  
Vertical bars indicate standard deviations

Figure 9

Weight change (WC) with the water adsorption test

(a) softwood fiber, (b) hardwood fiber

Vertical bars indicate standard deviations

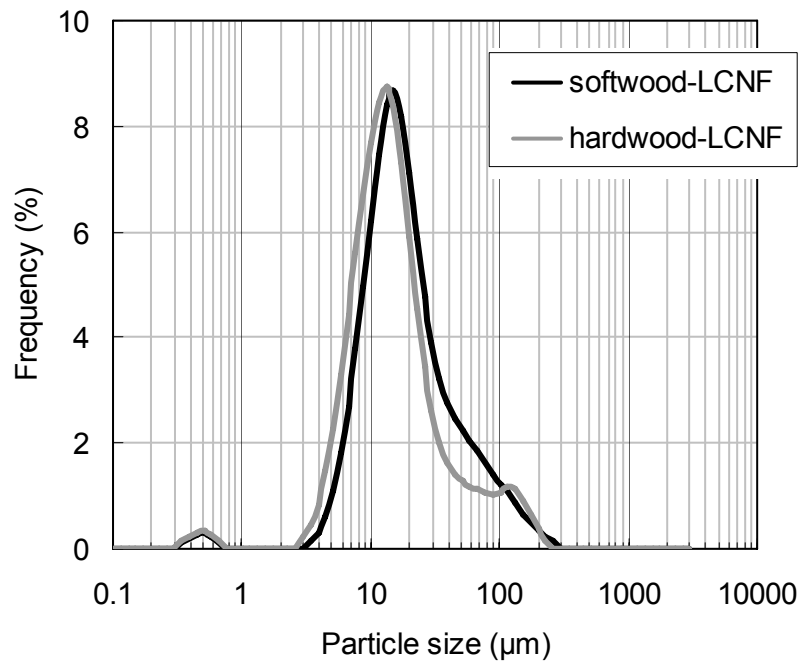
5

10

Table 1  
Fiberboard densities

5

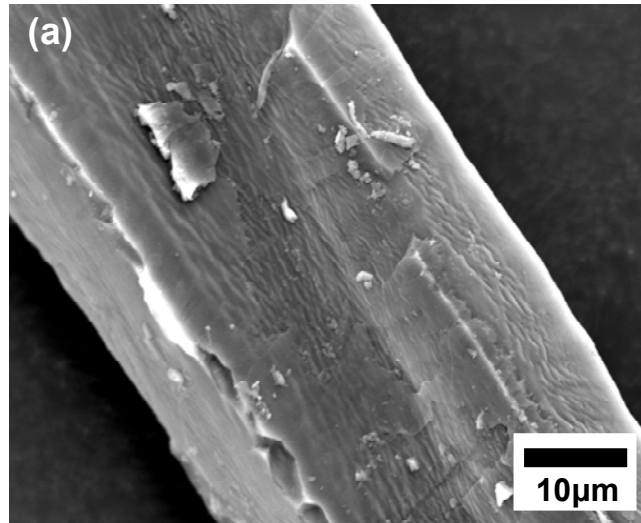
|                   | Target density (g/cm <sup>3</sup> ) | Measured density (g/cm <sup>3</sup> ) |            |
|-------------------|-------------------------------------|---------------------------------------|------------|
|                   |                                     | Control                               | LCNF mixed |
| Softwood<br>fiber | 0.60                                | 0.60                                  | 0.65       |
|                   | 0.75                                | 0.74                                  | 0.82       |
|                   | 1.00                                | 0.95                                  | 1.02       |
| Hardwood<br>fiber | 0.60                                | 0.62                                  | 0.68       |
|                   | 0.75                                | 0.75                                  | 0.83       |
|                   | 1.00                                | 0.93                                  | 1.05       |



15 Figure 1  
Size distributions shown for softwood and hardwood fiber and LCNF

5

10



15

20

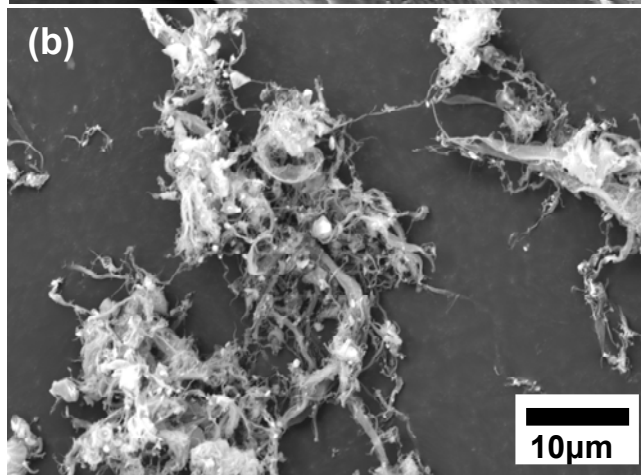


Figure 2

SEM micrographs of the surface morphology of (a) untreated softwood fiber and (b)

25 LCNF (200 rpm/4 h) made from softwood fiber

5

10

15

20

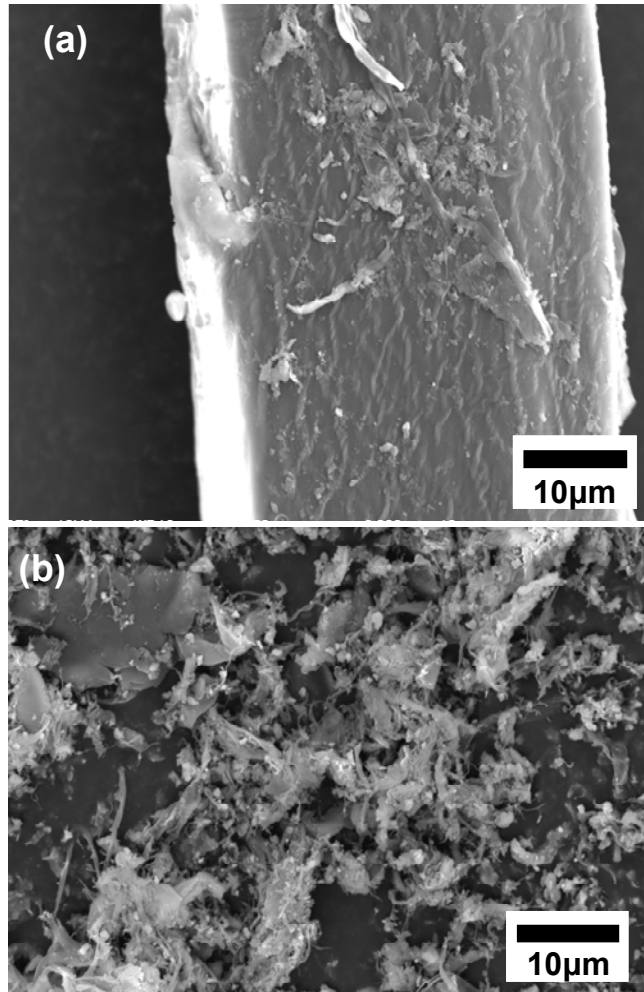


Figure 3

SEM micrographs of the surface morphology of (a) untreated hardwood fiber and (b)

25 LCNF (200 rpm/4 h) made from hardwood fiber

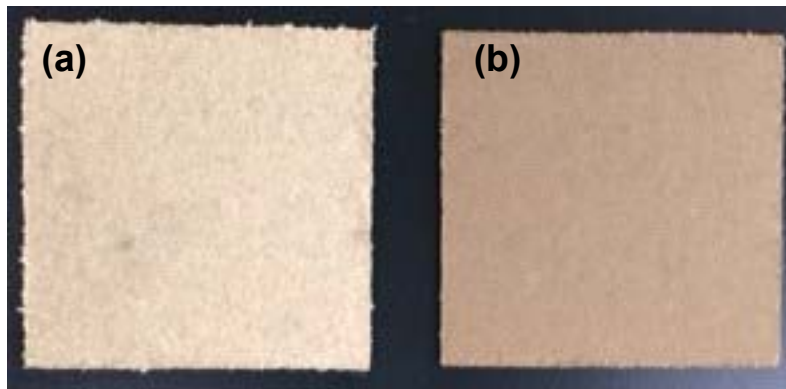


Figure 4

Manufactured board. (a) softwood fiberboard with LCNF, (b) hardwood fiberboard with

5 LCNF

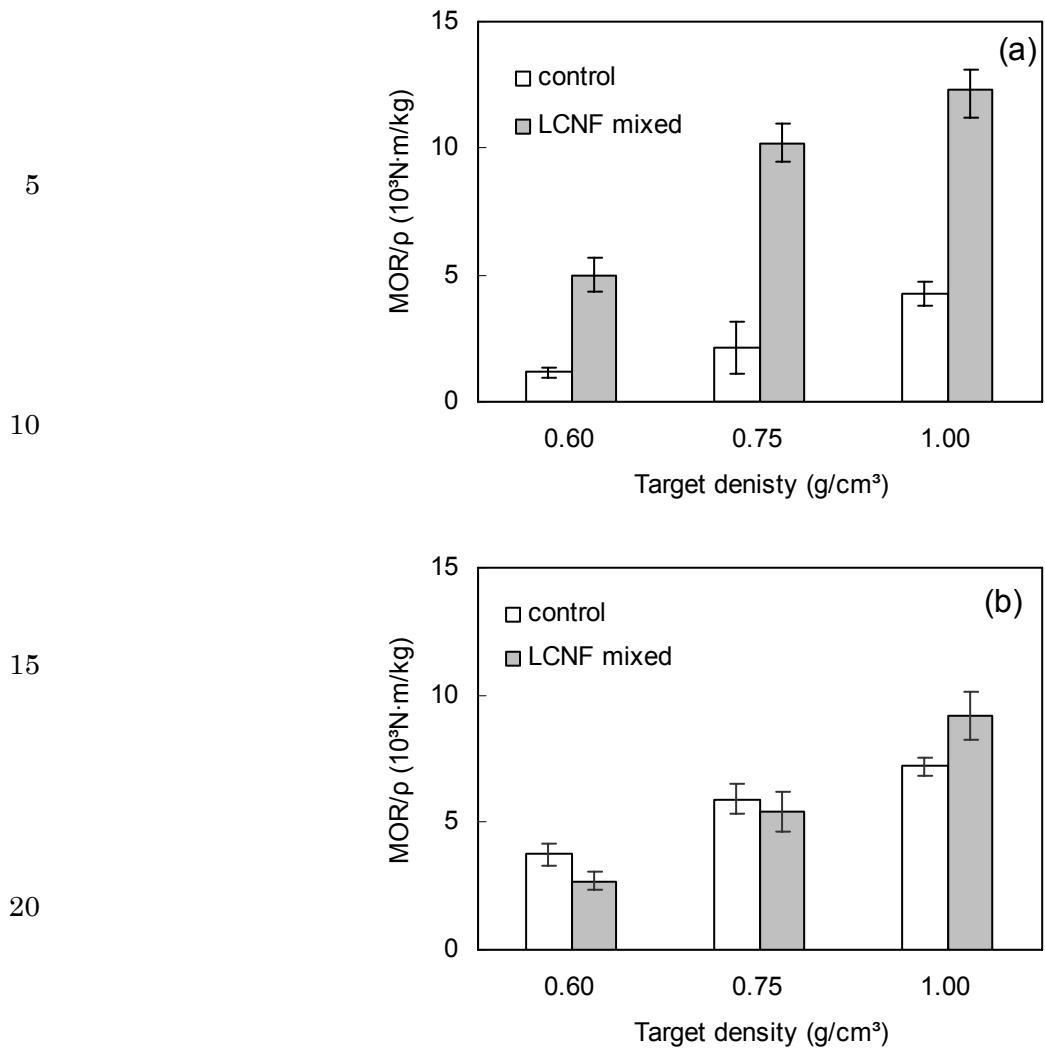


Figure 5

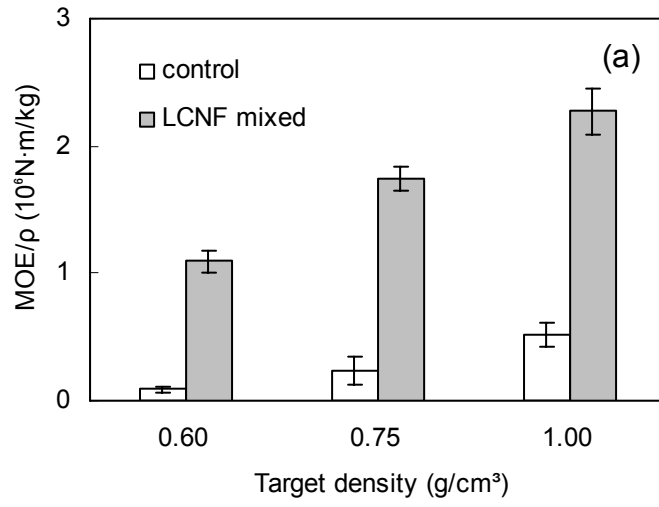
25 Specific modulus of rupture (MOR/ρ) of fiberboards containing LCNF

(a) softwood fiber, (b) hardwood fiber

Vertical bars indicate standard deviations

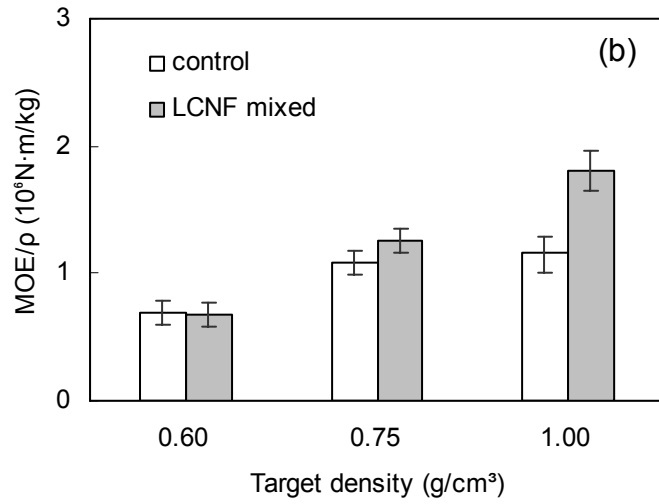


5



10

15



20

25

Figure 6  
Specific modulus of elasticity ( $MOE/\rho$ ) of fiberboards containing LCNF  
(a) softwood fiber, (b) hardwood fiber  
Vertical bars indicate standard deviations

30

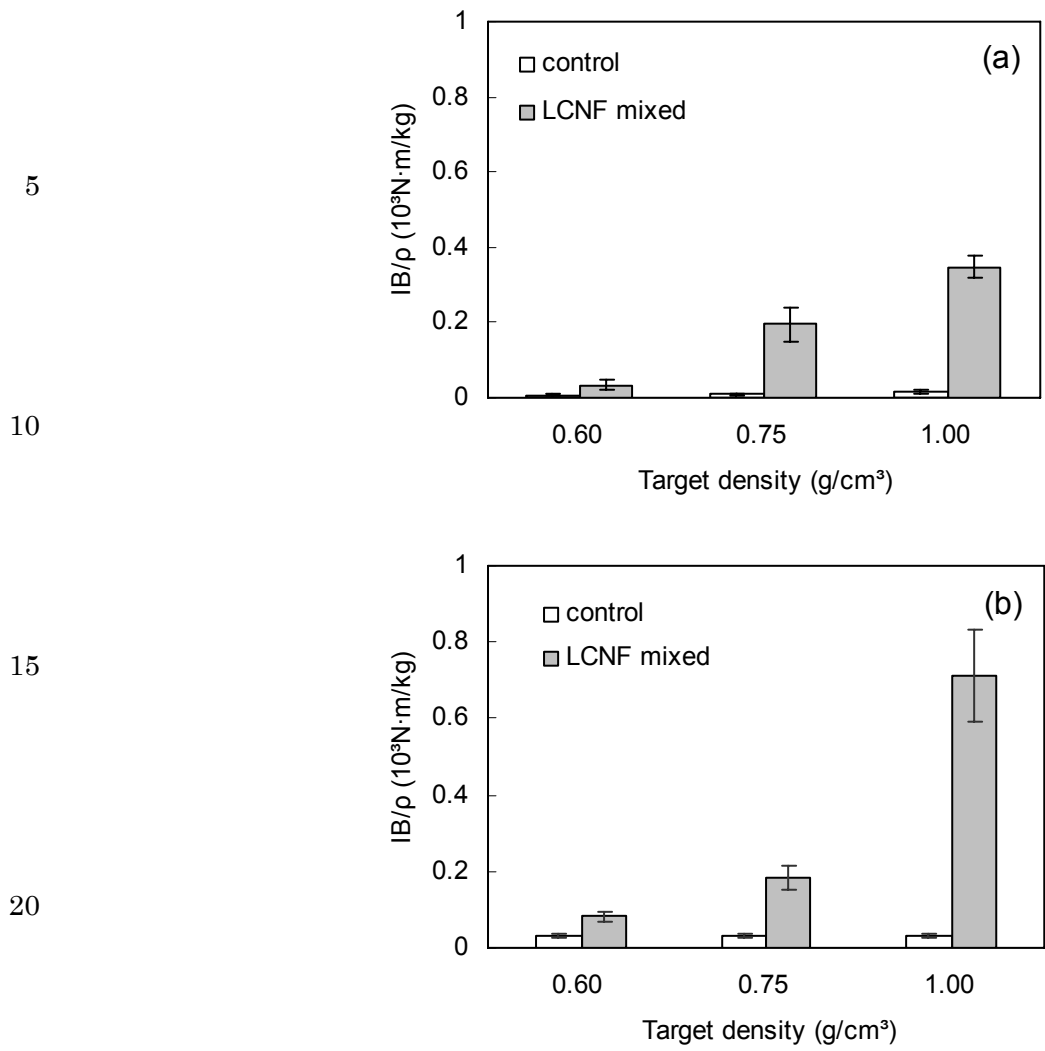


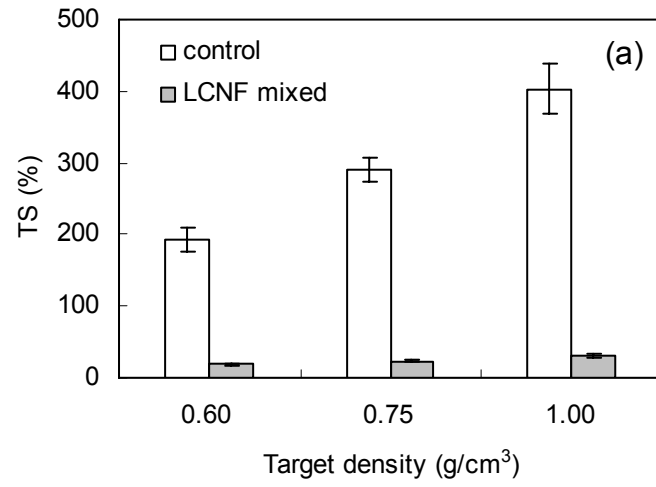
Figure 7

Specific internal bond strength (IB/ρ) of fiberboards containing LCNF

(a) softwood fiber, (b) hardwood fiber

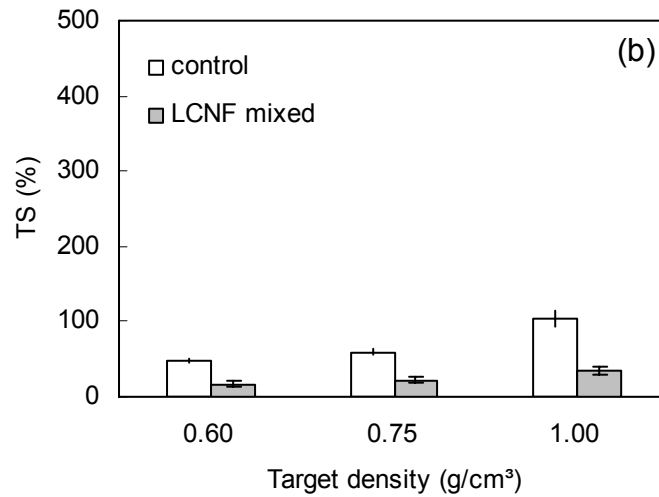
Vertical bars indicate standard deviations

5



10

15



20

25

Figure 8

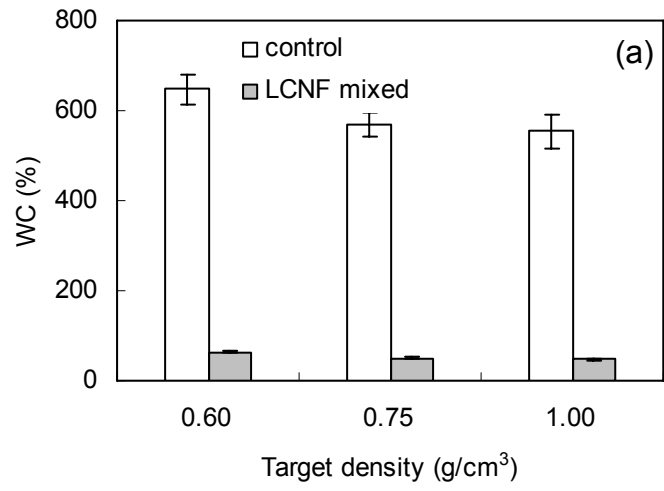
Thickness swelling (TS) with the water adsorption test

(a) softwood fiber, (b) hardwood fiber

Vertical bars indicate standard deviations

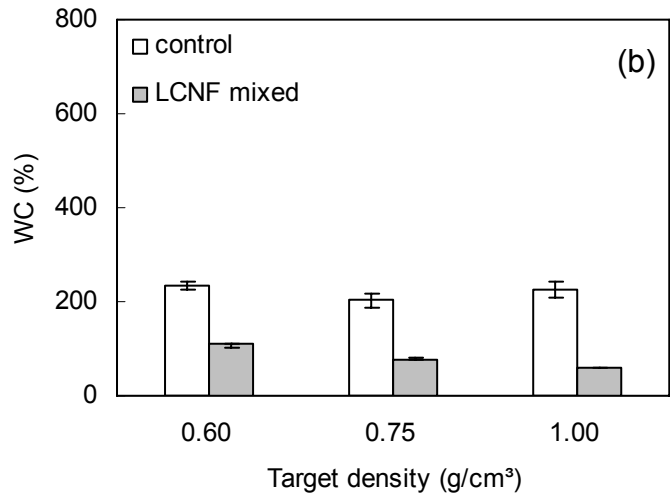
30

5



10

15



20

25

Figure 9  
Weight change (WC) with the water adsorption test  
(a) softwood fiber, (b) hardwood fiber  
Vertical bars indicate standard deviations

30